

DIFFERANTIAL FLOAT LEVEL CONTROL VALVE

CATALOG





TYPHOON[®]



ABOUT US

Tayfur Water Systems, which was established by Tayfun Yazaroğlu in 2004 in Izmir. We continue our activities as "Tayfur Water Systems Machinery Engineering Industry and Trade Inc." since 2017.

Our company offers its products and experiences to the local market and international market. Tayfur Water Systems, while strengthening its recognition abroad, continues to expand its production, sales and marketing activities every day.

Our engineers and technical staff, technological infrastructure, manufacturing, sales, project-consulting, contracting and service planning meets the requirements of the sector.

Our company manufactures "TYPHOON" brand, hydraulic control valves, plastic hydraulic control valves, backwash valves, plastic backwash valves, impact-free dynamic suction cups, plastic suction cups, bottom clamps, filter reverse flushing control devices. It is progressing towards becoming a strong brand in both domestic and foreign markets by meeting the special demands of its domestic and foreign customers.

Our Quality Policy

In order to be a leader in quality in the sales, marketing and service sector by complying with legal conditions and to comply with the requirements of Quality Management System in order to meet the needs and expectations of our customers, to continuously improve the efficiency and to not compromise the quality under any circumstances.

Our Mission

To be a company aiming to present its synergy in the national and international market which has always taken its responsibilities, desires and expectations of our customers in a correct, reliable and timely manner, within the framework of high quality standards, transforming efficiency and competition into an advantage...

Our Vision

To be a leading, innovative, powerful and reputable enterprise in its sector.

Differential Float Level Control Valve

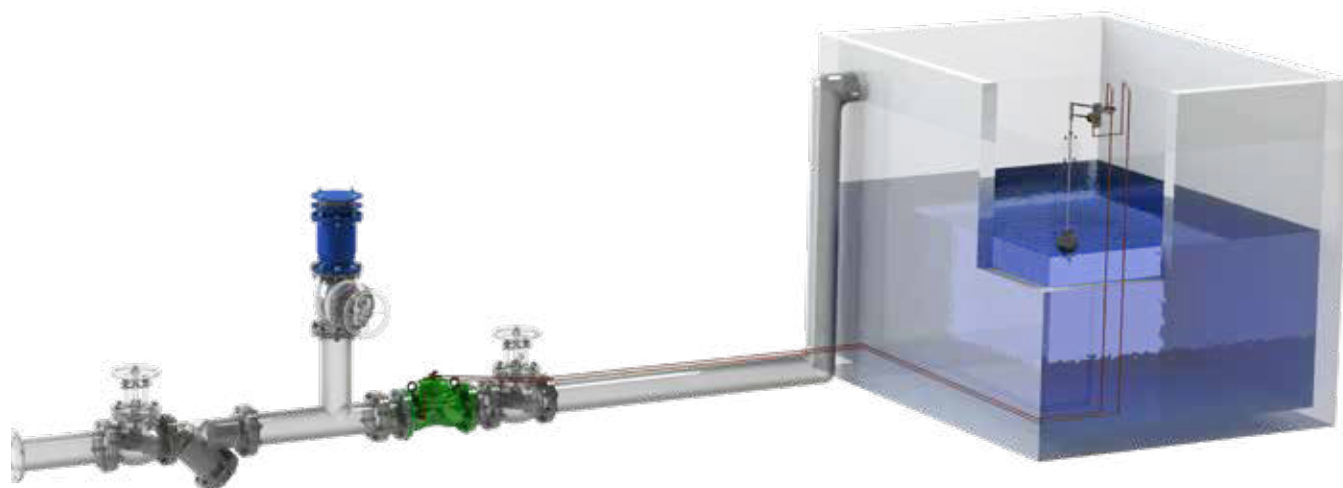
Hydraulic Control Valves

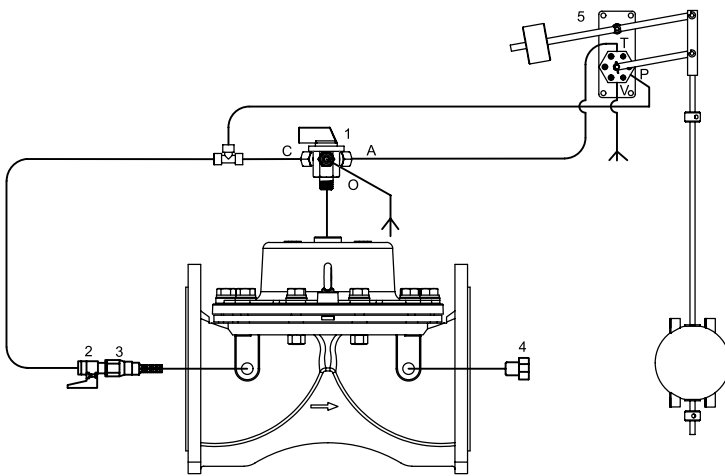
The Differential Float Level Control Valve is the hydraulic control valve designed to control water level in reservoirs and tanks continuously. Main valve is controlled by 2-way modulating type float pilot valve manually. Main valve mounted on reservoir and tank upstream is closed as fully sealed without causing surge when water level reaches to maximum level. Valve opening/closing speed may be adjusted in set value. It may be used in the system by mounting horizontal or vertical positions.

Order Information

Please provide the following information in order

- Maximum flow rate m³/h
- Maximum mains / operating pressure bar
- Main pipeline diameter mm
- Valve connection type
- Desired level control range -m





- 1 Three Way Selector Valve
- 2 Mini Ball Valve
- 3 In-Line Finger Filter
- 4 End Cap
- 5 Differential Level Pilot Valve

Assemble

- After connected the in-line finger filter that is numbered "3" and the mini ball valve that is numbered "2" to the inlet of the valve , which the connection is provided to the inlet (named as "C") of the closed positioned 3way valve and the inlet of the differential pilot (named as "P") with copper or plastic pipe.
- The outlet (named as "A") of the 3way valve is connected to the outlet of differential pilot (named as "T")
- The end-cap that is numbered "4" is connected to the outlet of valve.
- Valve nominal diameter has to be same as the line diameter or one size smaller than line diameter.
- Mount valve in the direction of the arrow as shown onto the valve.
- Usage of the isolation valve (butterfly valves , gate valves etc) , air release valves , Quick pressure relief control valve and strainers is recommended at assemble of the valves onto the pipeline.
- In the period of pressure reducing , the cavitation risk is dangerous for the body of valve. Adjust the wanted outlet pressure value according to the cavitation schema and apply to our Company.

Adjust

- Mount and fix the valve as differential float pilot which is shown as numbered "5" according to the level of Water in reservoir / tank.
- Mount the pipe of hydraulic pressure signal which is given with valve to the 3way selector valve according to the instruction as given hereunder

Auto "T" Close "P" Drain "V"

- Open the mini ball valve that is shown as numbered "2"

HYDRAULIC CONTROL VALVES

Flanged - Threaded - Angled - Victaulic

Typhoon hydraulic control valves are automatic valves with direct diaphragm shut-off working with line pressure. It is a comfortable, smooth flow in the minimum pressure loss of the body and diaphragm, which is kept in the foreground in its design.

In hydraulic control valves, worn parts such as shafts, bearings and bushings are longevity. The single moving part of valves is the diaphragm.

TYPHOON hydraulic control valves, in-line drinking water pump, agricultural irrigation, fire systems, filtration, industrial, etc. designed for use in areas.

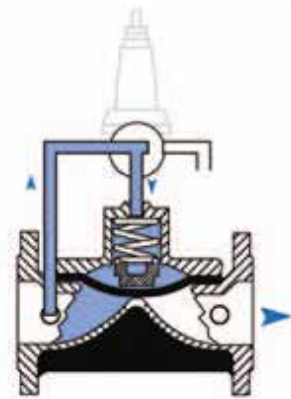
M	Manually Controlled Valve
PR	Pressure Reducing Control Valve
PRPS	Pressure Reducing + Pressure Sustaining Control Valve
PS	Pressure Sustaining Control Valve
PREL	Pressure Reducing + Solenoid Controlled Valve
EL	Solenoid Controlled Valve
QR	Quick Relief Control Valve
FL	Float Level Control Valve
FLEL	Electric Float Level Control Valve
DIFL	Differential Float Level Control Valve
PC	Pump (Booster) Control Valve
DPC	Deep Well (Submersible) Pump Control Valve
SA	Surge Anticipating Control Valve
HD	Hydraulic Check Valve



They are automatic control valves which are used hydraulically to perform the desired operations with line pressure without the need of energy sources in the mains line.

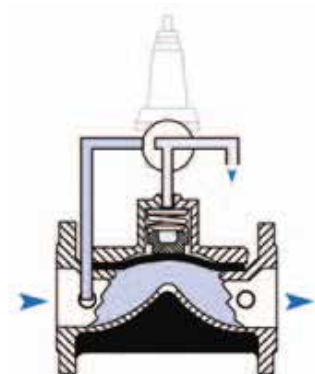
Valve Closing Mode

When the pilot discharge position on the main control valve in the closed position is reached, the pressurized water on the diaphragm of the main control valve is drained. When the line pressure reaches the position of spring force, hydraulic force is applied to the diaphragm of the control valve under water, so that the valve is in full open position.



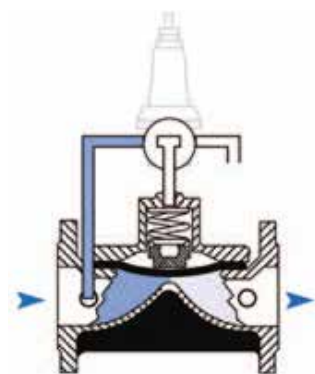
Valve Opening Mode

When the pilots on the main control valve reach the water pressure diaphragm, the water creates a hydraulic force. The resulting hydraulic force combines the diaphragm with the force applied by the spring to create a complete seal and close.



Modulation Mode

These are the pilot valves which are connected to the control valve which allows the main valve to operate in this position. According to the amount of flow and pressure to be adjusted, the water pressure on the diaphragm is controlled constantly, allowing it to operate in a modulated position.



HYDRAULIC CONTROL VALVES

Models

Flanged

Connection		Material		Body		Transmission Pressure			
Flanged		GGG40		Globe		PN10 - PN16 - PN25			
Available Diameters									
mm	50	65	80	100	125	150	200	250	300
inch	2	2½	3	4	5	6	8	10	12



Threaded

Connection		Material		Body		Transmission Pressure		
Threaded		GGG40		Globe		PN10 - PN16 - PN25		
Available Diameters								
mm	20	25	32	40	50	65	80	
inch	¾	1	1¼	1½	2	2½	3	



Victaulic

Connection		Material		Body		Transmission Pressure	
Victaulic		GGG40		Globe			PN10 - PN16 - PN25
Available Diameters							
mm	50	65	80	100	150	200	
inch	2	2½	3	4	6	8	



Angled

Connection		Material		Body		Transmission Pressure	
Flanged Threaded		GGG40		Globe		PN10 - PN16 - PN25	
Available Diameters							
mm	50	80	100	150			
inch	2	3	4	6			



Hydraulic Performance

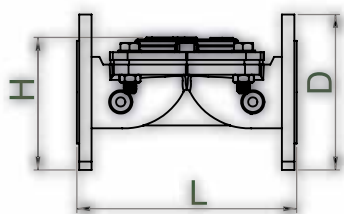
	inch	mm	inch	mm	inch	mm	inch	mm	inch	mm	inch	mm	inch	mm	inch	mm	inch	mm
Valve Diameter	2	50	2½	65	3	80	4	100	5	125	6	150	8	200	10	250	12	300
Kv m³/h @ 1bar	88		88		174		187		187		419		1139		1698		2276	
Cv gmp @ 1psi	102		102		201		216		216		484		1316		1961		2629	

$$Kv(Cv) = Q \cdot \sqrt{G/\Delta P}$$

Kv : Valve flow coefficient (flow rate at 1 bar pressure loss m³/h @ 1 bar)
Cv : Valve flow coefficient (flow in pressure loss of 1 psi GPM @ 1 psi)
Q : Flow (m³/h, gpm)

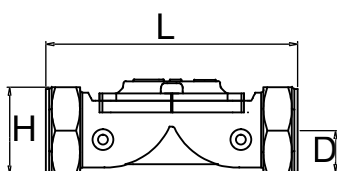
Cv = 1,155Kv
ΔP : Pressure Loss (bar, psi)
G : The specific gravity of water(Water=1.0)

Flanged



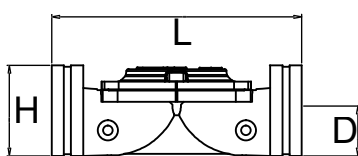
DN		D		L		H		Weight	
inch	mm	inch	mm	inch	mm	inch	mm	Lbs	Kg
2	50	6,50	165	8,66	220	5,87	149	17,60	8,00
2½	65	7,28	185	8,66	220	6,06	154	21,60	9,80
3	80	7,87	200	11,26	286	6,81	173	38,80	17,46
4	100	8,66	220	12,99	330	6,81	173	46,47	29,08
5	125	9,84	250	14,49	368	8,35	212	62,30	28,25
6	150	11,22	285	15,51	394	12,80	325	114,40	51,90
8	200	13,38	340	18,19	462	14,96	380	200,80	91,10
10	250	15,94	405	21,46	545	19,09	458	332,90	151,00
12	300	18,11	460	22,19	582	19,69	500	392,90	178,20

Threaded

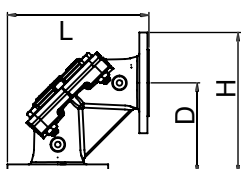
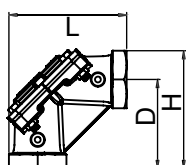


DN		D		L		H		Weight	
inch	mm	inch	mm	inch	mm	inch	mm	Lbs	Kg
3/4	20	0,9	23	5,2	132	2	50	2,2	1
1	25	0,9	23	5,2	132	2	50	2,2	1
1¼	32	1,35	34	6,8	173	3,6	92,3	6,3	2,85
1½	40	1,35	34	6,8	173	3,6	92,3	5,8	2,65
2	50	1,65	41,5	7,3	186	4,4	112	9	4,1
2½	65	1,8	46	8,9	226	4,6	118	11,7	5,3
3	80	2,05	52,5	12,5	318	5	127	26,4	12

Victaulic



DN		D		L		H		Weight	
inch	mm	inch	mm	inch	mm	inch	mm	Lbs	Kg
2	50	1,18	30	7,24	184	3,11	79	8,6	3,9
2½	65	1,46	37	8,9	226	3,74	95	9,92	4,5
3	80	1,77	45	11,42	290	3,7	94	13	5,9
4	100	2,26	57,5	12,48	317	4,19	106,5	13,6	6,2
6	150	3,3	84	17,87	454	5,24	133	66	30
8	200	4,53	115	21,40	544	13,10	332	143,3	



Angled

Threaded
Flanged

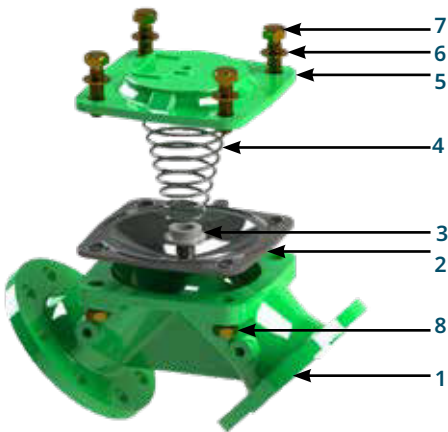
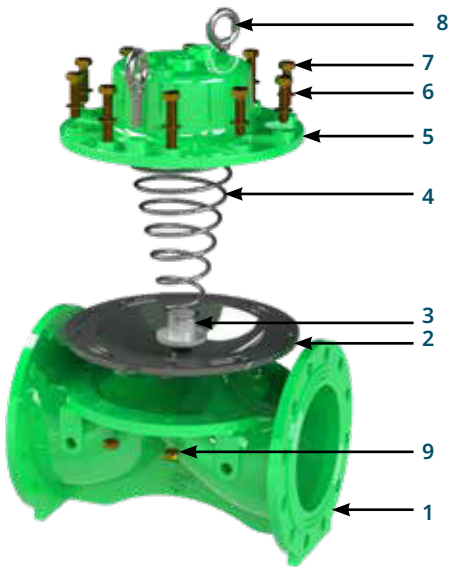
DN		D		L		H		Weight	
inch	mm	inch	mm	inch	mm	inch	mm	Lbs	Kg
2	50	4,4	112	6,05	154	6,05	154	9,47	4,3
3	80	7,1	180	9,45	240	9,45	240	29,3	13,3
2	50	4,4	112	7,44	189	7,44	189	19,07	8,65
3	80	7,1	180	10,95	278	10,95	278	39,02	17,7
4	100	7,48	190	12	305	12	305	60,19	27,3
6	150	9,05	230	14,92	379	14,92	379	106,26	48,2

HYDRAULIC CONTROL VALVES

Main Parts

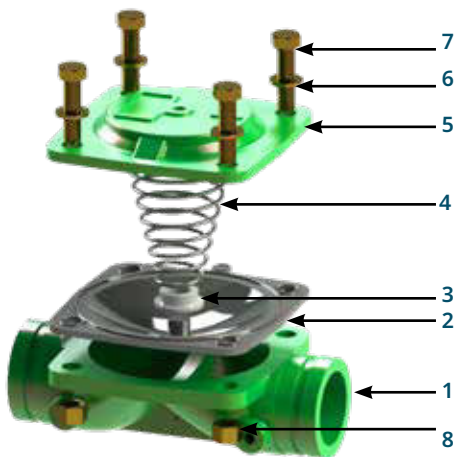
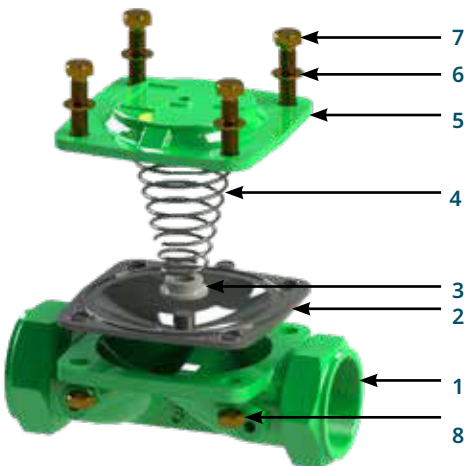
Flanged

Nr.	Material Name	Type Of Material
1	Body	GGG40
2	Diaphragm	Natural Rubber
3	Spring Seat	Polyamide
4	Spring	SST 302
5	Cover	GGG40
6	Washer	8.8 Coated Steel
7	Bolt	8.8 Coated Steel
8	Lifting Eyebolts	8.8 Coated Steel
9	Nut	8.8 Coated Steel



Threaded - Victaulic - Angled

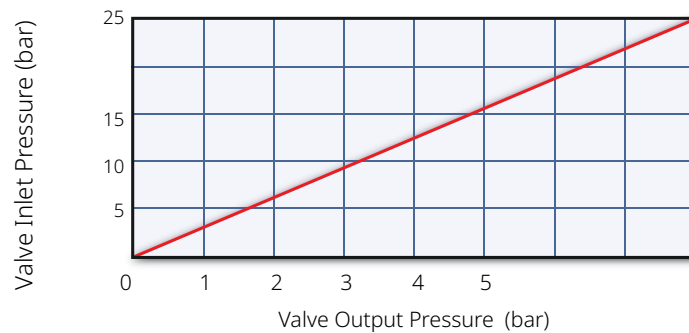
Nr.	Material Name	Type Of Material
1	Body	GGG40
2	Diaphragm	Natural Rubber
3	Spring Seat	Polyamide
4	Spring	SST 302
5	Cover	GGG40
6	Washer	8.8 Coated Steel
7	Bolt	8.8 Coated Steel
8	Nut	8.8 Coated Steel



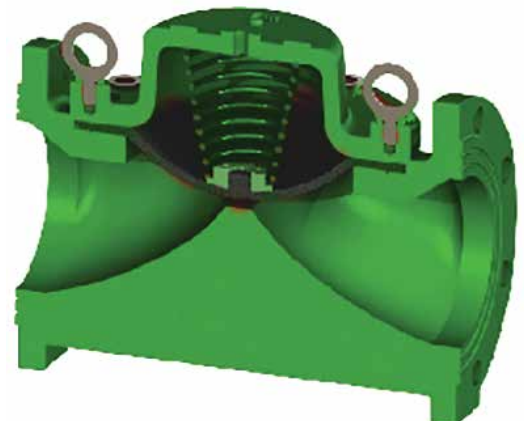
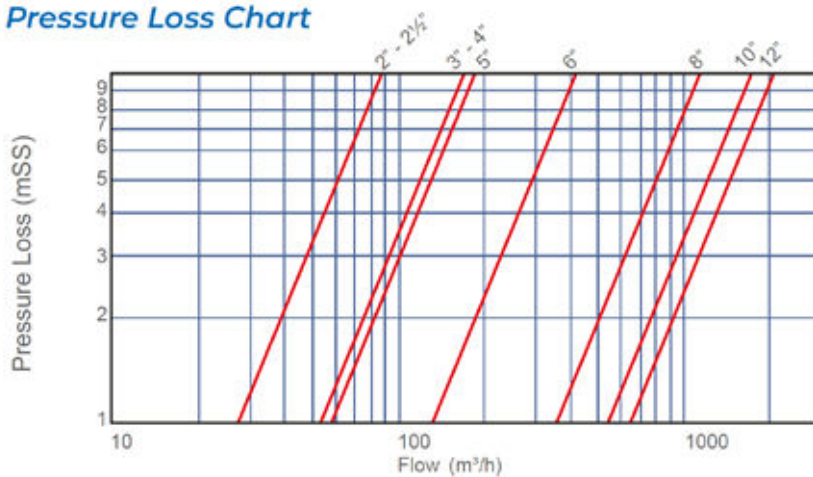
Technical Specifications

Operating Pressure	Standard	0,7 - 16 bar (10 - 240 psi)
	Low Pressure Range	0,5 - 10 bar (7,5 - 160 psi)
	High Pressure Range	0,7 - 25 bar (10 - 360 psi)
Temperature	Minimum Operating Temp.	- 10 °C (14 °F) DIN 2401/2
	Maximum Operating Temp.	80 °C (176 °F) DIN 2401/2
Connection	Flanged	DIN 2501, ISO 7005 - 2
	Threaded	ISO (BSP) , ANSI (NPT)
Covering	Standard	Epoxy
	Optional	Polyester
Hydraulic Connections	Standard	Reinforced Nylon (Air Brake) Hydraulic Tube SAE J 844
	Optional	Copper DIN1057
Actuator Type	With Single Control Chamber Aperture With Diaphragm	

Cavitation Chart



Pressure Loss Chart



Product Description / Ürün Tanımı
HYDRAULIC CONTROL VALVES / HİDROLİK KONTROL VANALARI

Product Types / Ürün Tipleri
TYPOON SERIES
 MANUAL HYDRAULIC CONTROL VALVE / PRESSURE REDUCING CONTROL VALVE
 PRESSURE REDUCING AND PRESSURE SUSTAINING CONTROL VALVE
 PRESSURE SUSTAINING CONTROL VALVE / PRESSURE REDUCING AND SOLENOID CONTROL VALVE
 SOLENOID CONTROL VALVE / QUICK RELIEF CONTROL VALVE / FLOAT LEVEL CONTROL VALVE
 ELECTRIC FLOAT LEVEL CONTROL VALVE / DIFFERENTIAL FLOAT LEVEL CONTROL VALVE
 PUMP CONTROL VALVE / DEEP WELL PUMP CONTROL VALVE / SURGE ANTICIPATING VALVE
 HYDRAULIC CHECK VALVE / Y TYPE HYDRAULIC CONTROL VALVE
 QUICK PRESSURE RELIEF CONTROL VALVE
 BACKFLUSHING CONTROL VALVES; VICTAULIC 3x2-VICTAULIC 4x3-FLANGE 3x2-FLANGE 4x3-VI

Product Features / Ürün Özellikleri
 Basınçlar / Pressures: PN10-PN16 -PN25
 Max Çalışma sıcaklığı / Max-Operating Temperature: 60°C-80°C
 Çaplar / Diameters : DN10/14/16/20/25/32/40/50/63/80/100/125/150/175/200/225/250/280/300/350/400/450/500/550/600/650/700/750/800/900/1000/1100/1200/1300/1400/1500/1600/1800/2000/2200/2400/2600/2800/3000/3200/3400/3600/3800/4000/4200/4400/4600/4800/5000/5200/5400/5600/5800/6000/6200/6400/6600/6800/7000/7200/7400/7600/7800/8000/8200/8400/8600/8800/9000/9200/9400/9600/9800/10000/10200/10400/10600/10800/11000/11200/11400/11600/11800/12000/12200/12400/12600/12800/13000/13200/13400/13600/13800/14000/14200/14400/14600/14800/15000/15200/15400/15600/15800/16000/16200/16400/16600/16800/17000/17200/17400/17600/17800/18000/18200/18400/18600/18800/19000/19200/19400/19600/19800/20000/20200/20400/20600/20800/21000/21200/21400/21600/21800/22000/22200/22400/22600/22800/23000/23200/23400/23600/23800/24000/24200/24400/24600/24800/25000/25200/25400/25600/25800/26000/26200/26400/26600/26800/27000/27200/27400/27600/27800/28000/28200/28400/28600/28800/29000/29200/29400/29600/29800/30000/30200/30400/30600/30800/31000/31200/31400/31600/31800/32000/32200/32400/32600/32800/33000/33200/33400/33600/33800/34000/34200/34400/34600/34800/35000/35200/35400/35600/35800/36000/36200/36400/36600/36800/37000/37200/37400/37600/37800/38000/38200/38400/38600/38800/39000/39200/39400/39600/39800/40000/40200/40400/40600/40800/41000/41200/41400/41600/41800/42000/42200/42400/42600/42800/43000/43200/43400/43600/43800/44000/44200/44400/44600/44800/45000/45200/45400/45600/45800/46000/46200/46400/46600/46800/47000/47200/47400/47600/47800/48000/48200/48400/48600/48800/49000/49200/49400/49600/49800/50000/50200/50400/50600/50800/51000/51200/51400/51600/51800/52000/52200/52400/52600/52800/53000/53200/53400/53600/53800/54000/54200/54400/54600/54800/55000/55200/55400/55600/55800/56000/56200/56400/56600/56800/57000/57200/57400/57600/57800/58000/58200/58400/58600/58800/59000/59200/59400/59600/59800/60000/60200/60400/60600/60800/61000/61200/61400/61600/61800/62000/62200/62400/62600/62800/63000/63200/63400/63600/63800/64000/64200/64400/64600/64800/65000/65200/65400/65600/65800/66000/66200/66400/66600/66800/67000/67200/67400/67600/67800/68000/68200/68400/68600/68800/69000/69200/69400/69600/69800/70000/70200/70400/70600/70800/71000/71200/71400/71600/71800/72000/72200/72400/72600/72800/73000/73200/73400/73600/73800/74000/74200/74400/74600/74800/75000/75200/75400/75600/75800/76000/76200/76400/76600/76800/77000/77200/77400/77600/77800/78000/78200/78400/78600/78800/79000/79200/79400/79600/79800/80000/80200/80400/80600/80800/81000/81200/81400/81600/81800/82000/82200/82400/82600/82800/83000/83200/83400/83600/83800/84000/84200/84400/84600/84800/85000/85200/85400/85600/85800/86000/86200/86400/86600/86800/87000/87200/87400/87600/87800/88000/88200/88400/88600/88800/89000/89200/89400/89600/89800/90000/90200/90400/90600/90800/91000/91200/91400/91600/91800/92000/92200/92400/92600/92800/93000/93200/93400/93600/93800/94000/94200/94400/94600/94800/95000/95200/95400/95600/95800/96000/96200/96400/96600/96800/97000/97200/97400/97600/97800/98000/98200/98400/98600/98800/99000/99200/99400/99600/99800/100000/100200/100400/100600/100800/101000/101200/101400/101600/101800/102000/102200/102400/102600/102800/103000/103200/103400/103600/103800/104000/104200/104400/104600/104800/105000/105200/105400/105600/105800/106000/106200/106400/106600/106800/107000/107200/107400/107600/107800/108000/108200/108400/108600/108800/109000/109200/109400/109600/109800/110000/110200/110400/110600/110800/111000/111200/111400/111600/111800/112000/112200/112400/112600/112800/113000/113200/113400/113600/113800/114000/114200/114400/114600/114800/115000/115200/115400/115600/115800/116000/116200/116400/116600/116800/117000/117200/117400/117600/117800/118000/118200/118400/118600/118800/119000/119200/119400/119600/119800/120000/120200/120400/120600/120800/121000/121200/121400/121600/121800/122000/122200/122400/122600/122800/123000/123200/123400/123600/123800/124000/124200/124400/124600/124800/125000/125200/125400/125600/125800/126000/126200/126400/126600/126800/127000/127200/127400/127600/1

Product Brand / Ürünün Markası

Directives and Regulations / Direktif ve Yönetmelikler

It has been accepted by the company that the applicable requirements of the 2014/68 / EU Pressure Equipment Directive have been fulfilled and its responsibility has been taken for the products defined above. The products defined above have been checked by internal production controls carried out by the organization. If there is a change in the product, this declaration will not be accepted and will lose its validity.

Yukarıda tanımları verilmiş olan ürünlerin için 2014/68/EU Basınçlı Ekipmanlar Yönetmeliğinin uygulanabilen gerekliliklerinin yerine getirildiği ve sorumluluğunun alınmış olduğu firma tarafından kabul edilmiştir. Yukarıda tanımları verilmiş olan ürünler, iç üretim kontrollerinin kuruluş tarafından yapıldığı kontrol edilmiştir. Üründe bir değişiklik olduğu takdirde bu bevan kabul edilemeyecek ve geçerliliğini yitirecektir.

CERTIFICATE NUMBER: IDS.CE.2024.19095.1

Certificate Date : 16.02.2024
Validity Date : 16.02.2025

International Documenting System Doo.
Budva / Montenegro

Authorised by
Vladimir Vučić SEKULIC



INTERNATIONAL DOCUMENTING SYSTEM DOO
Miroslav Plet 88 BOSTO Bulvar-Moskva
m.plet@yandex.ru, <http://www.doosystem.com>

This certificate was issued electronically and remains the property of OSI Dux and is bound by the conditions of contract. Printed copy can be supplied on request. To verify the authenticity send an e-mail to info@osiduxmontenegro.com

Manufacturer / Üretici
TAYFUR SU SİSTEMLERİ MAKİNE MÜHENDİSLİK SANAYİ VE TİCARET ANONİM ŞİRKETİ

Address / Adres
KARACAOĞLAN MAHALLESİ 6172 SOKAK NO:19 A BORNOVA / İZMİR / TÜRKİYE

Product Description / Ürün Tanımı
FILTER BACKWASH CONTROL DEVICES / FİLTRE TERS YIKAMA KONTROL CİHAZLARI

Product Types / Ürün Tipleri

AC Tipi – 1-2-3 Dahili DP
DC Tipi – 1-2-3 Dahili DP
AC Tipi – 2-4-6 DP Hariç
DC Tipi – 2-4-6 DP Hariç
AC Tipi – 2/10 DP Hariç
DC Tipi – 2/10 DP Hariç (2 Kablolu)
Basıncı Fark Cihazı (DP)

Product Brand / Ürünün Markası

FLUSHCON

Directives and Regulations / Direktif ve Yönetmelikler
2006/42/EC Machinery Safety Directive / 2006/42/AT Makine Emniyet Direktifi
2014/35/EC Low Voltage Directive / 2014/35/AT Alçak Gerilim Yönetmeliği

Harmonized Standards / Harmonize Standartlar

EN ISO 120100:2010, EN 60204-1:2018

It has been accepted by the company that the applicable requirements of the 2006/42/EC Machinery Safety Directive have been fulfilled and its responsibility has been taken for the products defined above. The products defined above have been checked by internal production controls carried out by the organization. If there is a change in the product, this declaration will not be accepted and will lose its validity.

Yukarıda tanımları verilmiş olan ürünlerin için Makine Emniyeti Direktifinin uygulanabilen gerekliliklerinin yerine getirildiği ve sorumluluğunun alınmış olduğu firma tarafından kabul edilmiştir. Yukarıda tanımları verilmiş olan ürünler, iç üretim kontrollerinin kuruluş tarafından yapıldığı kontrol edilmiştir. Üründe bir değişiklik olduğu takdirde bu beyan kabul edilemez ve geçerliliğini yitirir.

CERTIFICATE NUMBER: IDS.CE.2024.19094.1

Certificate Date : 16.02.2024
Validity Date : 16.02.2025

International Documenting System Doo.
Budva / Montenegro

Authorised by
Vladimir Vučić SEKULIC



INTERNATIONAL DOCUMENTING SYSTEM DOO
Miravci Put 88 85700 Budva, Montenegro
info@doosystem.com, Tel: 020 220 000 00

This certificate was issued electronically and remains the property of OSI Design and is bound by the conditions of copyright. Printed copy can be replicated on request. To verify the authenticity send an e-mail to info@osidesigns.com

[illegible][illegible][illegible][illegible]



**Her
Fabrika** Bir
Kaledir*

H. Otatürk



*Every factory is a fortress

Karacaoğlan Mah. 6172 Sok. No:19/A Işkent - Bornova - İzmir

+90 232 458 49 99 / +90 232 458 57 67

www.tayfursu.com.tr | info@tayfursu.com.tr