



PILOTS

TAYFUR WATER SYSTEMS

TYPHOON®



We **Care** About
Every Drop of
Water

Tayfur Water Systems, which was established by Tayfun Yazaroğlu in 2004 in Izmir. We continue our activities as "Tayfur Water Systems Machinery Engineering Industry and Trade Inc." since 2017.

Our company offers its products and experiences to the local market and international market. Tayfur Water Systems, while strengthening its recognition abroad, continues to expand its production, sales and marketing activities every day.

Our engineers and technical staff, technological infrastructure, manufacturing, sales, project-consulting, contracting and service planning meets the requirements of the sector.

Our company manufactures "TYPHOON" brand, hydraulic control valves, plastic hydraulic control valves, backwash valves, plastic backwash valves, impact-free dynamic suction cups, plastic suction cups, bottom clamps, filter reverse flushing control devices. It is progressing towards becoming a strong brand in both domestic and foreign markets by meeting the special demands of its domestic and foreign customers.

STORY OF US

Our Quality Policy

In order to be a leader in quality in the sales, marketing and service sector by complying with legal conditions and to comply with the requirements of Quality Management System in order to meet the needs and expectations of our customers, to continuously improve the efficiency and to not compromise the quality under any circumstances.

Our Mission

To be a company aiming to present its synergy in the national and international market which has always taken its responsibilities, desires and expectations of our customers in a correct, reliable and timely manner, within the framework of high quality standards, transforming efficiency and competition into an advantage...

Our Vision

To be a leading, innovative, powerful and reputable enterprise in its sector.



3 Way Multipurpose Plastic Pilot

TYPHOON PLASTIC PILOT is a 3-way, diaphragm actuated spring loaded pilot valve that is designed for control of pressure reducing, pressure sustaining and quick relief hydraulic valves.

The pilot valve operates as a selector between the common port (1), two other port (2,3) and the discharge port (4). The pilot valve will operate main valve as a factor of the relation between regulated pressure and the adjusted set value.

TYPHOON PLASTIC PILOT VALVE can be used for implementing wide range of hydraulic control functions.

Features

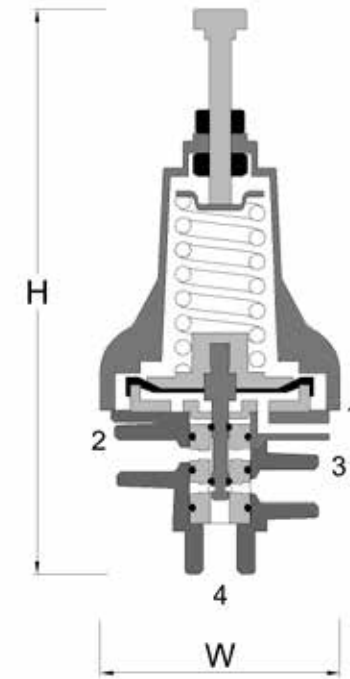
- 3-way pilot valve
- Made of corrosion proof composite materials
- Completely main valve control and minimum pressure loses with wide regulation range
- Simple design, easy to adjust and maximum dependability.
- Same pilot can be used for typical applications by simply changing port connections.

Typical Applications

- Pressure Reducing valves - PR
- Pressure Sustaining valves - PS
- Quick Relief Valves - QR
- Topography- compensating remote hydraulic control - RC
- Differential pressure sustaining valves - DI

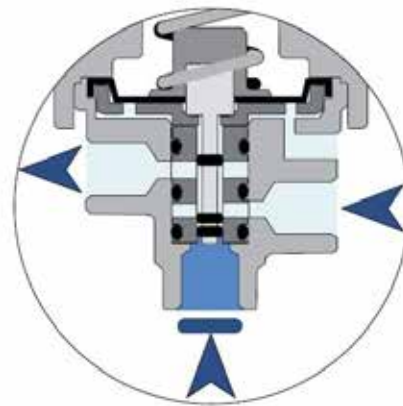
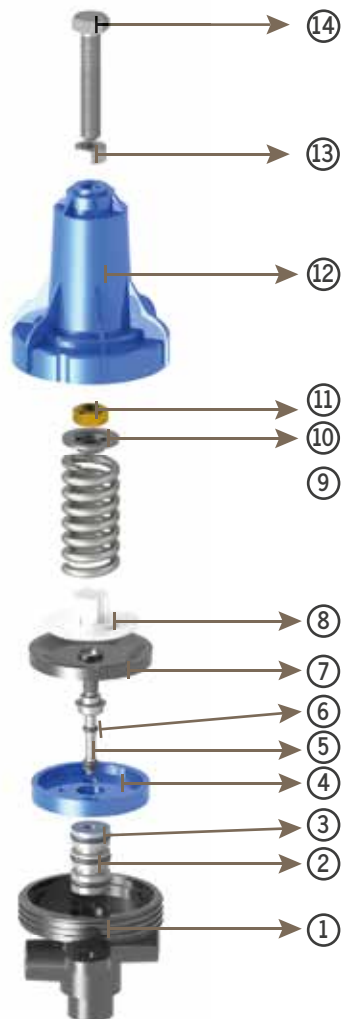
Spring Adjustment Range

Spring	Colour	Bar	PSI
Standart	Green	0,5 - 6,0	7-87
Optional	Red	1,0 - 8,0	15-116
Optional	Yellow	0,3 - 3,0	5-45

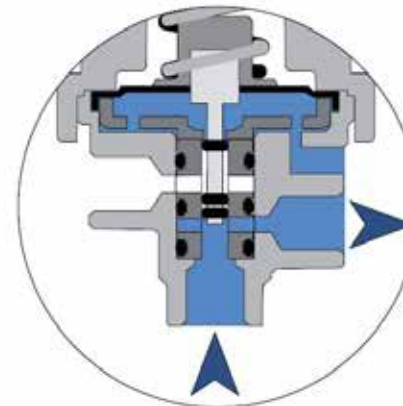


3 Way Multipurpose Plastic Pilot

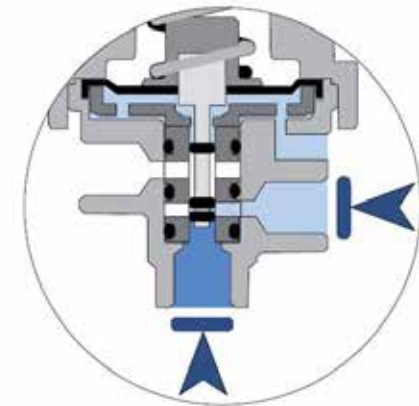
Principle of Operation (Shown in "Pressure Reducing Mode")



Low Pressure



High Pressure



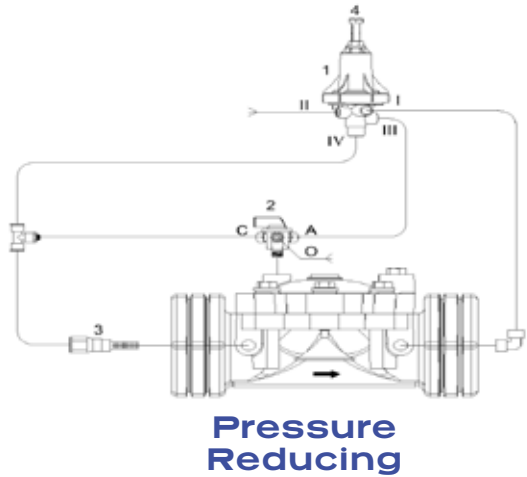
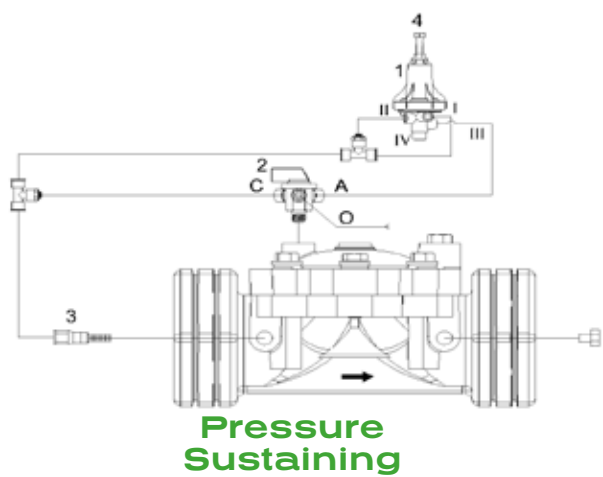
Required Pressure

#	Material Name	Type of Material
1	Body	Glass Reinforced Polyamide
2	Internal Seat	PTFE
3	Oring	NBR
4	Diapghram Support	Glass Reinforced Polyamide
5	Shaft	SST
6	Oring	NBR
7	Diapghram	NBR
8	Diapghram Support	Delrin
9	Spring	SST
10	Spring Seat	SST
11	Nut	Brass
12	Bonnet	Glass Reinforced Polyamide
13	Nut	SST
14	Adjust Bolt	SST

3 Way Multipurpose Plastic Pilot

Main Component

- 1-Typhoon plastic pilot
- 2- 3-way selector valve
- 3- In-line finger filter
- 4- Adjust bolt



Technical Data

General	
Pressure Rating	10 bar / 150 psi
Pressure Adjustment Range	0.3 - 7.5 bar / 4 - 110 ps
Fluid Temoerature	50 °C max / 120 °F max
Weight	0,19 kg/ 0,42 lbs
Material	
Body and Bonnet	Glass Reinforced Polyamide
Elastomers	NBR
Internal Parts	DELRIN,GRP,SST,PTFE
Spring	SST
Dimension	
H (Height) max.	150 mm / 5,9"
W (Width)	65 mm / 2,56"
Port Connection	
1,2,3,4	NPT 1/8"

Part	Pressure Sustaining	Pressure Reducing
1	Upstream	Downstream
2	Upstream	Vent
3	Valve Control Chamber	Valve Control Chamber
4	Vent	Upstream

The flow control pilot is a 3-way, diaphragm actuated, spring- loaded pilot-valve that is designed for control of differential pressure-reducing hydraulic valves. The pilot valve serves as a selector between the common port and the two other ports. The pilot valve will vent, pressurize or lock the hydraulic valve's chamber as a factor of the relation between the regulated pressure and the adjusted set-value.

Features

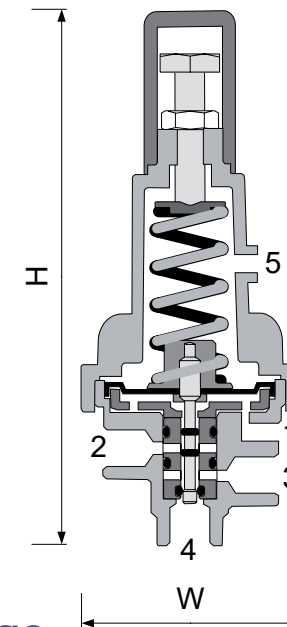
- 3-way pilot valve
- Made of corrosion proof composite materials
- Minimize pressure losses through the main valve by completely venting the control chamber
- Wide regulation range
- Accurate and easy to adjust
- Simple design and maximal dependability

Typical Applications

- Flow rate control valves - FR
- Differential pressure reducing valves - DP
- Pressure reducing for low pressure setting - PR

Technical Data

General	
Pressure Rating	10 bar / 150Psi
Pressure Adjustment Range	0.2 - 3bar / 3-40 Psi
Fluid Temperature	50 °C max / 120 °F max
Weight	1.17 kg / 0.37 lbs
Materials	
Body and Bonnet	GRP
Elastomers	NBR
Internal Parts	SST
Spring	SST
Dimensions	
H (Height) max.	143 mm / 5.36"
W (Width)	65mm / 2.56"
Port ConnectionsPressure Rating	
1,2,3,4,5	NPT 1/8"



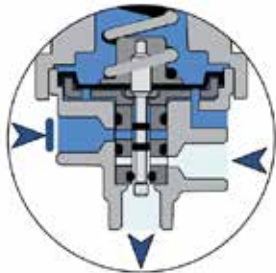
Spring Adjustment Range

Spring Number	Colour	Bar	PSI
82 (Std.)	White	0,2 - 0,5	3-7
72	Yellow	0,3 - 3,0	4-40

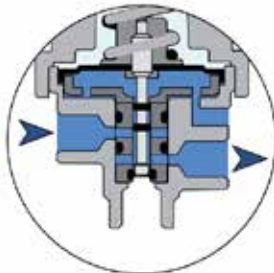


Plastic Mini Pilot

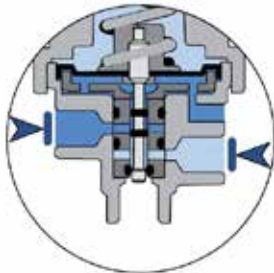
Flow Rate, Differential Pressure Reducing Plastic Pilot



Low Differential Pressure



High Differential Pressure



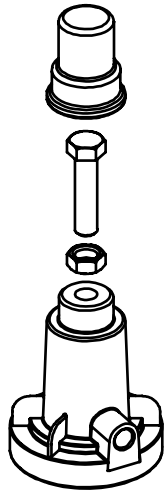
Required Differential Pressure

Main Components

1. Self flushing filter
2. Isolation ball valve
3. 3-way manual selector valve
4. Flow control pilot valve
5. Orifice plate

* Downstream orifice for Y type valve
** Upstream orifice for globe valve

Bonnet Kit



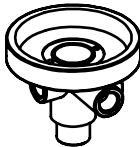
Spring



Internal Parts Kit

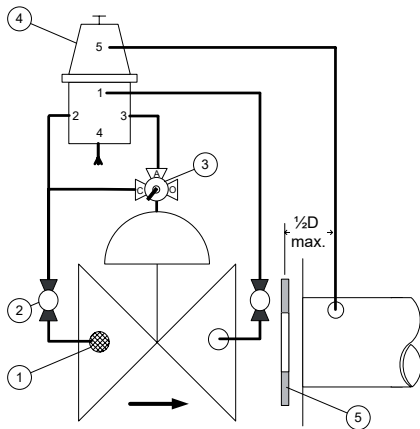
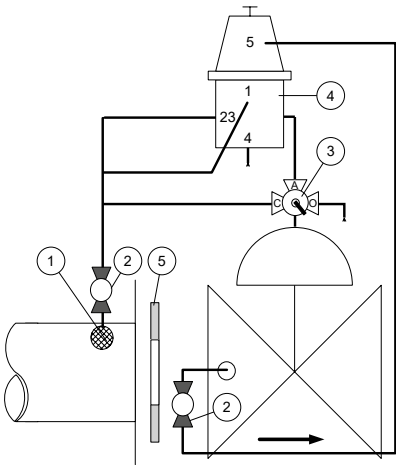


Body Kit



Connections

Port	Connect to:
1	Upstream orifice pressure
2	Upstream
3	Valve Control Chamber
4	Vent
5	Downstream orifice pressure



2 Way Metal Pilots

Pressure Reducing Mini Metal Pilot (2 way)

Pressure reducing mini metal pilot, diaphragm actuated, spring-loaded pressure reducing pilot valve, designed for control of hydraulic-valves. The pilot valve modulates to keep a steady, pre-set downstream pressure. As the downstream pressure falls below the set point, the pilot valve opens the water passage between its "IN" and "OUT" ports thus allowing the water in the main valve's chamber to vent to the downstream, and open the main valve. As the downstream pressure rises above the set point, the pilot-valve throttles the internal passage, restricting the flow out of the main valve control chamber, enabling the valve to keep its position or to close.

Features

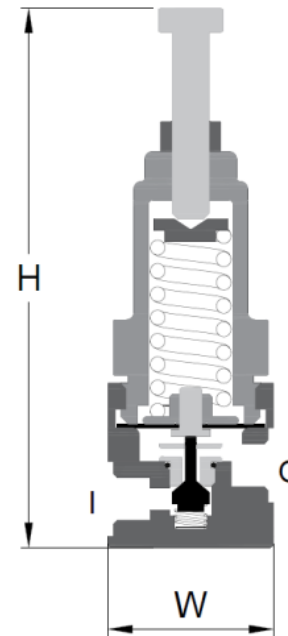
- 2-way pilot valve
- Normally-open, allows water passage when downstream pressure is lower than the adjusted spring setting
- Wide regulation range
- Accurate and easy to adjust
- No internal sealing allows for maximal dependability

Typical Applications

Pressure reducing - PR

Spring Adjustment Range

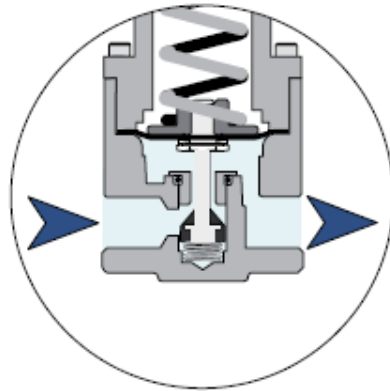
Spring	Bar	PSI
Standart	1 - 11	15 - 160
Optional	0,5 - 3	7 - 45
Optional	2 - 25	30 - 360



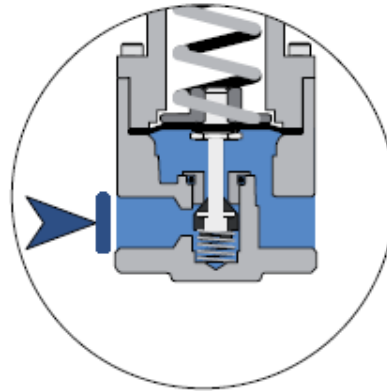
2 Way Metal Pilots

Pressure Reducing Mini Metal Pilot (2 way)

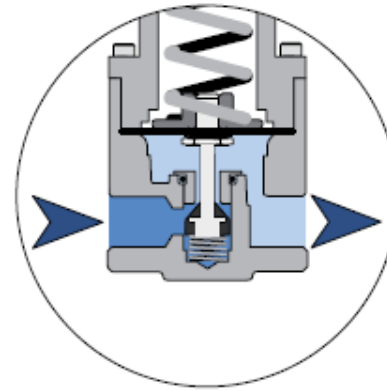
Principle of Operation



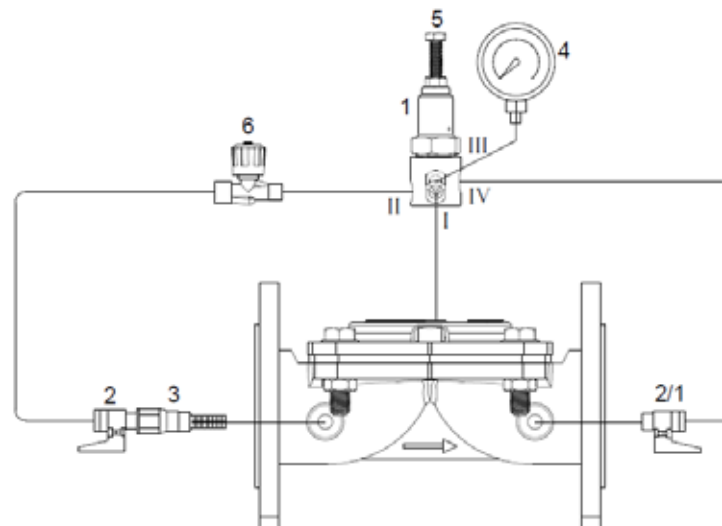
Low Pressure



High Pressure



Required Pressure



Main Component

- 1- Pressure Reducing Pilot
- 2- Mini Ball Valve
- 3- Finger Filter
- 4- Gauge
- 5- Pressure Adjust Bolt
- 6- Needle Valve

2 Way Metal Pilots

Pressure Reducing Mini Metal Pilot (2 way)

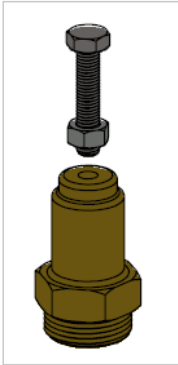
Connections

Port	Pressure Reducing
I1	Valve Control Chamber
I2	Upstream (through Orifice)
O1	Downstream
O2	Pressure Gauge (optional)

Technical Data

General		
Pressure Rating	25 bar / 360 psi	
Pressure Adjustment Range	0,5 - 25 bar / 7 - 360 psi	
Fluid Temoerature	60 °C max. / 140 °F max.	
Weight	0,75 Kg / 1,65 lbs	
Materials	Standart	Optional
Body and Bonnet	Brass	SST
Elastomers	NBR	EPDM
Internal Parts	SST	
Spring	SST	
Dimension		
H (Height)	150 mm / 5,90 inch	
W (Width)	45 mm / 1,77 inch	
Port Connection		
I1, I2, O1,O2	BSP 1/4"	

Bonnet Kit



Spring Kit



Internal Parts Kit



Body Kit



2 Way Metal Pilots

Pressure Sustaining Mini Metal Pilot (2 way)

Pressure sustaining mini metal pilot diaphragm actuated, spring-loaded pressure-sustaining pilot-valve, designed for control of hydraulic valves. The pilot valve modulates to keep a steady, pre-set pressure upstream the valve's location. As the upstream pressure rises above the adjusted value, the pilot-valve opens the water passage between its "COM" and "OUT" port thus allowing the water in the main valve's chamber to vent to the downstream, causing the main valve to open. As the downstream pressure falls below the set point, the pilot valve throttles the internal passage, restricting the flow out of the main valve control chamber, enabling the valve to keep its position or to close.

Features

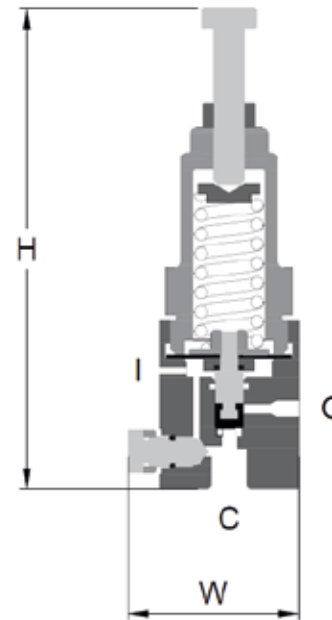
- A pressure sustaining/relief 2-way pilot valve
- Normally-close, will open when the upstream pressure exceed the adjustable spring setting
- Wide regulation range
- Easy to adjust
- Minimal internal sealing and maximal dependability
- SST needle valve - integral in the valve's design

Typical Applications

- Pressure sustaining valves - PS
- Pressure relief valves - PS[R]
- Quick-acting pressure relief - QR

Spring Adjustment Range

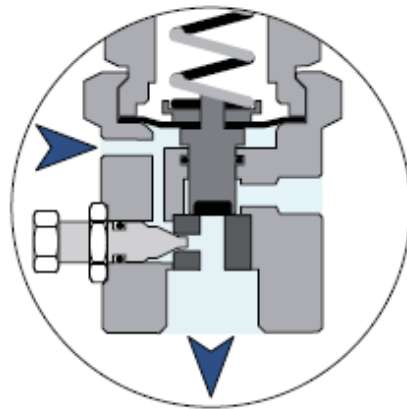
Spring	Bar	PSI
Standart	0,6 - 12	09 - 175
Optional	0,5 - 3	7 - 45



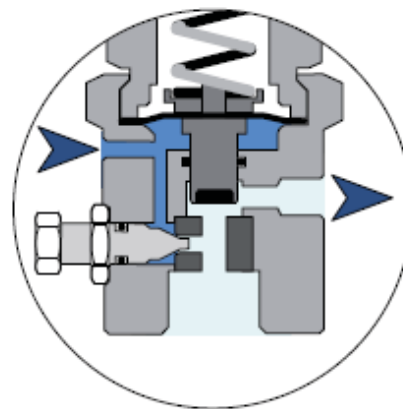
2 Way Metal Pilots

Pressure Sustaining Mini Metal Pilot (2 way)

Principle of Operation



Low Pressure



High Pressure



Bonnet Kit



Spring Kit



Internal Parts Kit



Body Kit

Needle Valve
Kit



2 Way Metal Pilots

Pressure Sustaining Mini Metal Pilot (2 way)

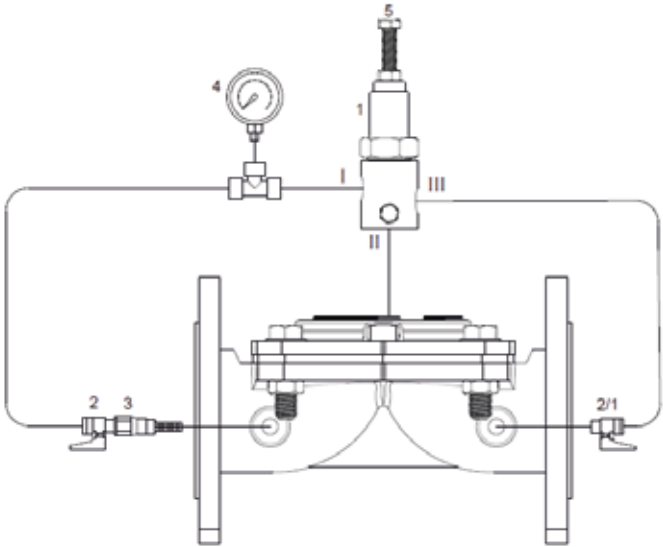
13

Connections

Port	Altitude
I	Upstream
C	Valve Control Chamber
O	Downstream

Technical Data

General		
Pressure Rating	25 bar / 360 psi	
Pressure Adjustment Range	0,5 - 12 bar / 7 - 175 psi	
Fluid Temoerature	60 C max. / 140 F max.	
Weight	0,91 Kg / 2 lbs	
Materials	Standart	Optional
Body and Bonnet	Brass	SST
Elastomers	NBR	EPDM
Internal Parts	SST	
Spring	SST	
Dimension		
H (Height)	160 mm / 6,30 inch	
W (Width)	45 mm / 1,77 inch	
Port Connection		
I, O, C	BSP 1/4"	



Main Component

- 1- Pressure Sustaining Pilot
- 2- Mini Ball Valve
- 3- In-Line Finger Filter
- 4- Gauge
- 5- Adjust Bolt

2 Way Metal Pilots

Pressure Reducing Metal Pilot (2 way)

Pressure reducing metal pilot, diaphragm actuated, spring-loaded pressure reducing pilot-valve, designed for control of hydraulic valves. The pilot valve modulates to keep a steady, pre-set downstream pressure. As the downstream pressure falls below the set-value, the pilot valve opens a full passage between its "IN" and "OUT" ports thus allowing the valve to open by venting the control chamber pressure to the downstream side of the valve. As the downstream pressure rises above the set-value, the pilot valve throttles the internal passage, restricting the flow out of the main valve control chamber and causing the main valve to keep its position or to close.

Features

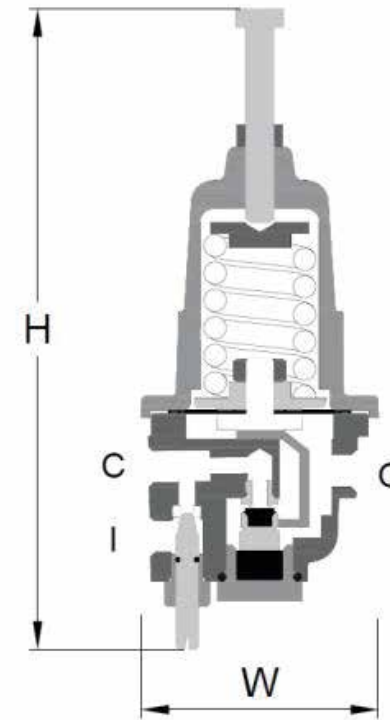
- A pressure-reducing 2-way pilot valve
- Normally-open, allows water passage when downstream pressure is lower than the adjusted spring setting
- Wide regulation range
- A single spring is used for setting range of 1.5 to 20 bar (20 - 300 psi). No need for different springs for that range!
- Super accuracy and repeatability
- Easy to adjust
- Integral SST needle valve - highly accurate and simplify the control-loop assembly
- No internal sealing allows for maximal dependability

Typical Applications

Pressure reducing - PR

Spring Adjustment Range

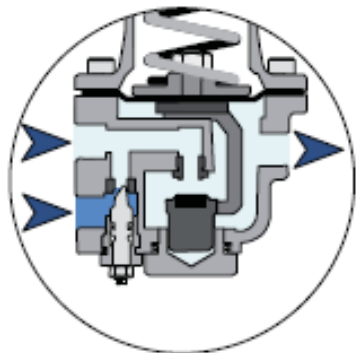
Spring	Bar	PSI
Standart	3 -19	44 - 275
Optional	15 - 35	215 - 500
Optional	0,3 - 0,5	4 - 50



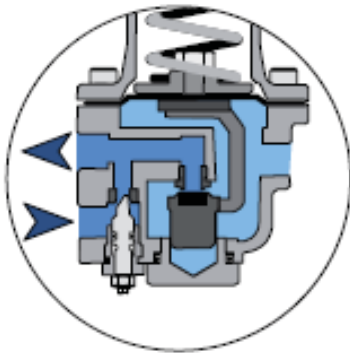
2 Way Metal Pilots

Pressure Reducing Metal Pilot (2 way)

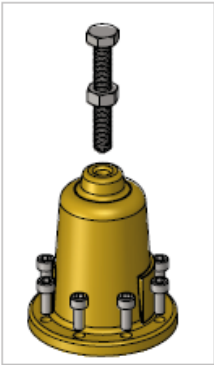
Principle of Operation



Low Pressure



High Pressure



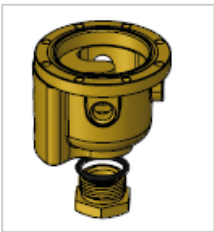
Bonnet Kit



Spring Kit



Internal Parts Kit



Body Kit



Needle Valve Kit

2 Way Metal Pilots

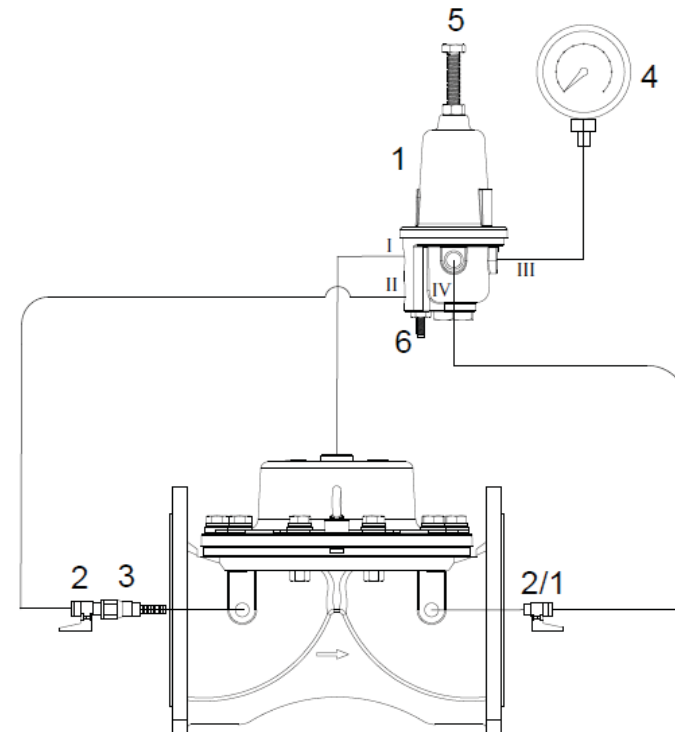
Pressure Reducing Metal Pilot (2 way)

Connections

Port	Pressure Reducing
I	Upstream
C	Valve Control Chamber
O	Downstream

Technical Data

General		
Pressure Rating	25 bar / 360 psi	
Pressure Adjustment Range	0,3 - 35 bar / 4 - 500 psi	
Fluid Temoerature	60 °C max. / 140 °F max.	
Weight	2,3 Kg / 5,1 lbs	
Materials	Standart	Optional
Body and Bonnet	Brass	SST
Elastomers	NBR	EPDM
Internal Parts	SST	
Spring	SST	
Dimension		
H (Height)	230 mm / 9,05 inch	
W (Width)	84 mm / 3,07 inch	
Port Connection		
I, O, C	BSP 1/4"	



Main Component

- 1- Pressure Reducing Pilot
- 2- Mini Ball Valve
- 3- Finger Filter
- 4- Gauge
- 5- Pressure Adjust Bolt
- 6- Needle Valve

2 Way Metal Pilots

Pressure Sustaining Metal Pilot (2 way)

Pressure Sustaining Metal Pilot, diaphragm actuated, spring-loaded, pressure-sustaining pilot-valve, designed for control of hydraulically actuated valves. The pilot valve modulates to keep a steady, pre-set pressure upstream of the valve's location. As the upstream pressure rises above the adjusted value, the pilot-valve opens to allow water flow between its "COM" and "OUT" ports, thus allowing the water in the main valve's chamber to be vented out to the downstream, causing the main valve to open. As the downstream pressure falls below the set-value, the pilot valve throttles the internal passage, restricting the flow out of the main valve's control-chamber, restricting the valve's opening or causing it to close

Features

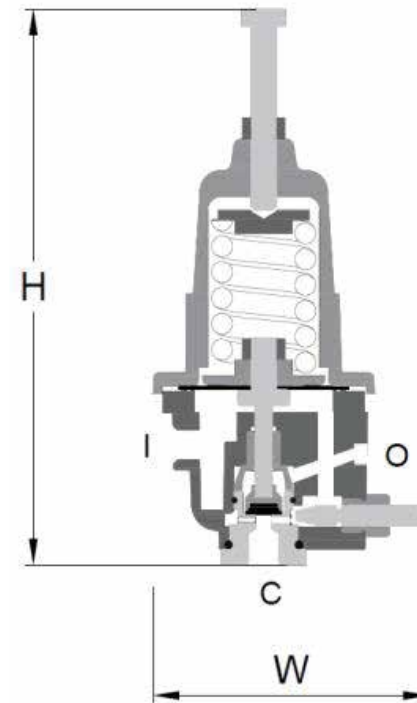
- 2-way pilot valve for high-accuracy pressure sustaining/relief applications
- Normally-close, will open when the upstream pressure exceed the adjustable spring setting
- Integral SST needle valve - highly accurate and simplify the control-loop assembly
- Wide regulation range: one spring is used for most of the setting range
- Easy to adjust
- Minimal internal sealing and maximal dependability

Typical Applications

- Pressure sustaining valves - PS
- Pressure relief valves - PS[R]
- Quick-acting pressure relief - QR

Spring Adjustment Range

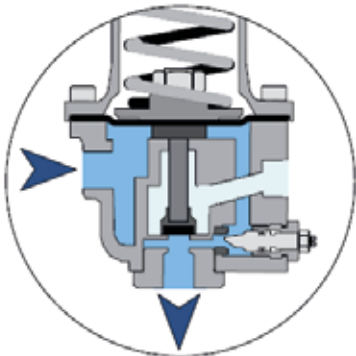
Spring	Bar	PSI
Standart	2,5 - 19	37 - 275
Optional	15 - 35	215 - 500
Optional	0,3 - 3,5	4 - 50



2 Way Metal Pilots

Pressure Sustaining Metal Pilot (2 way)

Principle of Operation



Low Pressure



High Pressure



Bonnet Kit



Spring Kit



Internal Parts Kit



Body Kit



Needle Valve Kit

2 Way Metal Pilots

Pressure Sustaining Metal Pilot (2 way)

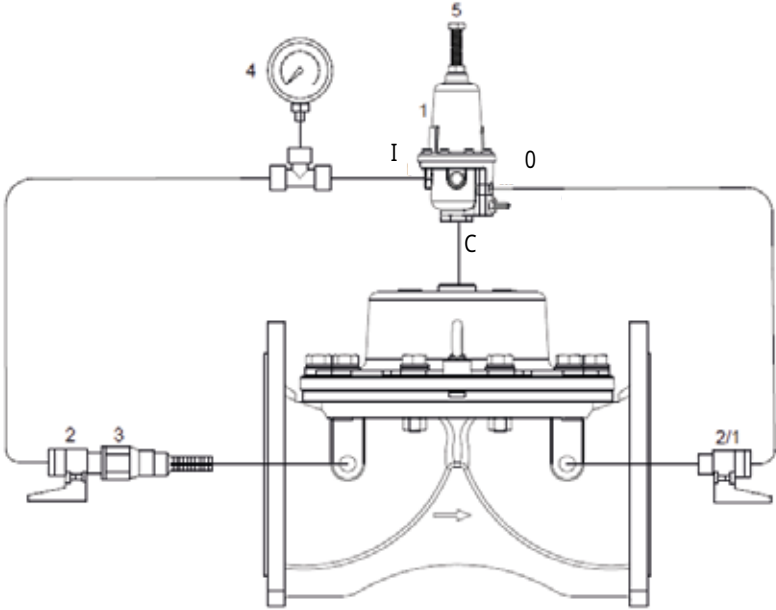
19

Connections

Port	Pressure Reducing
I	Upstream
C	Valve Control Chamber
O	Downstream

Technical Data

General		
Pressure Rating	25 bar / 360 psi	
Pressure Adjustment Range	0,3 - 35 bar / 4 - 500 psi	
Fluid Temoerature	60 °C max. / 140 °F max.	
Weight	2,5 Kg / 5,5 lbs	
Materials	Standart	Optional
Body and Bonnet	Brass	SST
Elastomers	NBR	EPDM
Internal Parts	SST	
Spring	SST	
Dimension		
H (Height)	230 mm / 9,05 inch	
W (Width)	100 mm / 3,94 inch	
Port Connection		
I, O, C	BSP 1/4"	



Main Component

- 1- Pressure Sustaining Pilot Valve
- 2- Mini Ball Valve
- 3- In-Line Finger Filter
- 4- Gauge
- 5- Adjust Bolt

2 Way Metal Pilots

Rate Of Flow Metal Pilot (2 way)

Rate of flow metal pilot, Rate of flow metal pilot, diaphragm actuated, spring- loaded pilotvalve that is designed for control of flow-regulating hydraulic valves. The pilot valve serves as a selector between the common port and the two other ports. The pilot valve will vent, pressurize or lock the hydraulic valve's chamber as a factor of the relation between the pressure differential across a supplementary orifice plate and the adjusted set-value.

Features

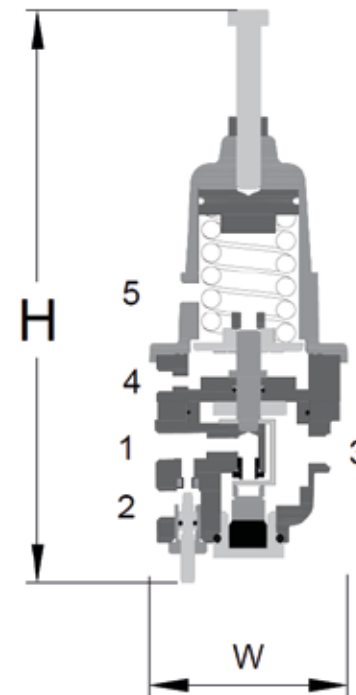
- A differential pressure regulating, 2-way pilot valve
- Fully vents the control chamber to open the main valve - thus minimizing pressure-losses, when the differential pressure of the orifice drops below the set-value.
- Easy to adjust
- Pressure-balanced - will not be affected, even by large, upstream pressure-variations.
- Superb sensitivity & repeatability

Typical Applications

- Flow rate control valves – FR

Spring Adjustment Range

Spring	Meter	PSI
Standart	2-7	3-10
Optional	5-60	7-90



2 Way Metal Pilots

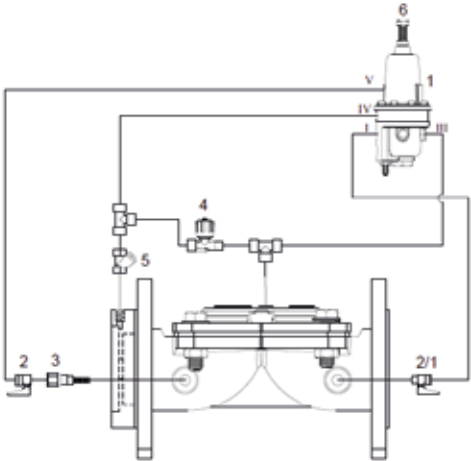
Rate Of Flow Metal Pilot (2 way)

Connections

Port	Flow Rate
I	Downstream Pressure
II	Blind Cap
III	Valve Control Chamber
IV	Upstream Orifice Plate
V	Upstream Pressure

Technical Data

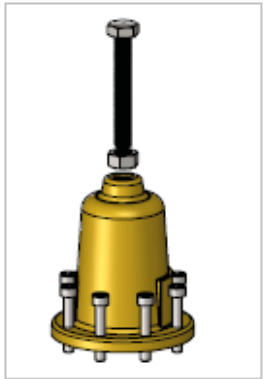
General		
Pressure Rating	25 bar / 360 psi	
Pressure Adjustment Range	2-60 bar / 3-90 psi	
Fluid Temoerature	60 °C max. / 140 °F max.	
Weight	3 Kg / 2,61 lbs	
Materials	Standart	Optional
Body and Bonnet	Brass	SST
Elastomers	NBR	EPDM
Internal Parts	SST, PVDF	
Spring	SST	
Dimension		
H (Height)	250 mm / 9,85 inch	
W (Width)	100 mm / 3,94 inch	
Port Connection		
1,2,3	BSP 1/4"	
4,5	BSP 1/8"	



Main Component

- 1- Flow Control Valve
- 2- Mini Ball Valve
- 3- In-Line Finger Filter
- 4- Needle Valve
- 5- Strainer
- 6- Adjust Bolt

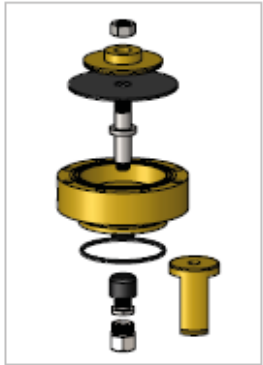
Bonnet Kit



Spring Kit



Internal Parts Kit



Body Kit



Needle Valve Kit



3 Way Multipurpose Pilots

Pressure Reducing Metal Pilot (3 way)

Pressure reducing metal pilot, diaphragm actuated, spring- loaded pilot-valve that is designed for control of pressure-reducing hydraulic valves. The pilot valve serves as a selector between the common port and the two other ports. The pilot valve will vent, pressurize or lock the hydraulic valve's chamber as a factor of the relation between the regulated pressure and the adjusted set-value.

Features

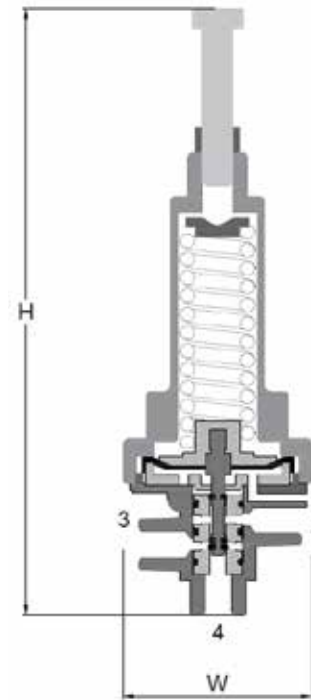
- A pressure-reducing, 3-way pilot valve
- Differential pressure reducing - Optional
- Fully vents the control chamber to open the main valve - allows minimizing pressure-losses, when downstream pressure drops below the set value.
- Wide regulation range
- Easy to adjust
- Pressure-balanced - will not be affected, even by large, upstream pressure-variations.

Typical Applications

- Pressure reducing valves – PR

Spring Adjustment Range

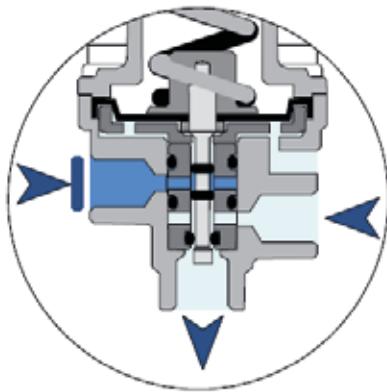
Spring	Bar	PSI
Standart	1,5 - 12	22 - 175
Optional	0,5 - 6	7 - 85



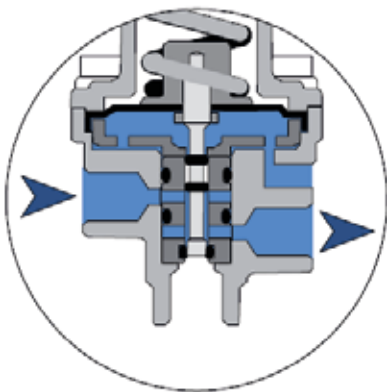
3 Way Multipurpose Pilots

Pressure Reducing Metal Pilot (3 way)

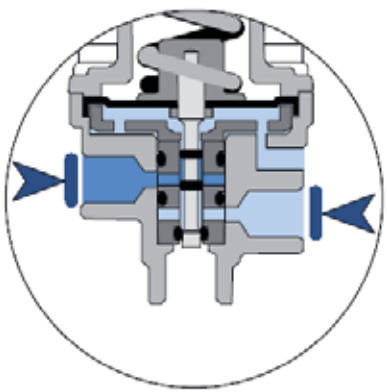
Principle of Operation



Low Pressure

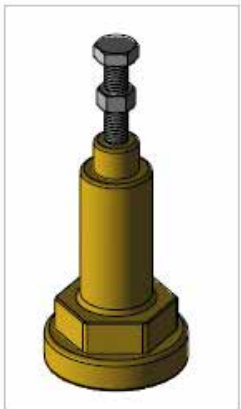


High Pressure



Required Pressure

Bonnet Kit



Spring Kit



Internal Parts Kit



Body Kit



3 Way Multipurpose Pilots

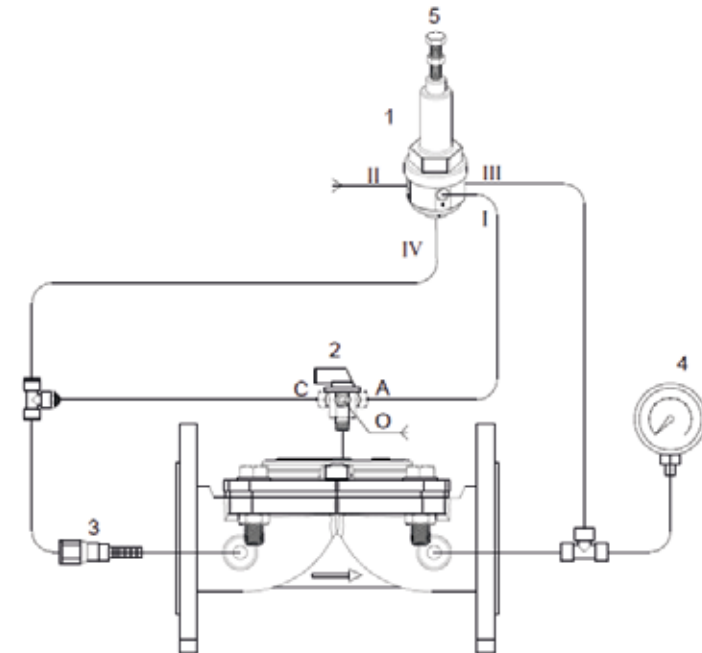
Pressure Reducing Metal Pilot (3 way)

Connections

Port	Pressure Reducing
1	Valve Control Chamber
2	Vent
3	Downstream
4	Upstream

Technical Data

General		
Pressure Rating	25 bar / 360 psi	
Pressure Adjustment Range	0,5 - 12 bar / 7 - 175 psi	
Fluid Temoerature	60 °C max. / 140 °F max.	
Weight	1,04 Kg / 2,3 lbs	
Materials	Standart	Optional
Body and Bonnet	Brass	SST
Elastomers	NBR	EPDM
Internal Parts	SST, PVDF	
Spring	SST	
Dimension		
H (Height)	170 mm / 6,7 inch	
W (Width)	60 mm / 2,36 inch	
Port Connection		
1,2,3,4	BSP 1/4"	



Main Component

- 1- Pressure Reducing Pilot
- 2- 3 Way Selector Valve
- 3- In-Line Finger Filter
- 4- Gauge
- 5- Adjust Bolt

3 Way Multipurpose Pilots

Pressure Sustaining Metal Pilot (3 way)

Pressure sustaining metal pilot, diaphragm actuated, spring- loaded pilot-valves that are designed for control of pressure-sustaining hydraulic valves. The pilot valve serves as a selector between the common port and the two other ports. The pilot valve will vent, pressurize or lock the hydraulic valve's chamber as a factor of the relation between the regulated pressure and the adjusted set-value.

Features

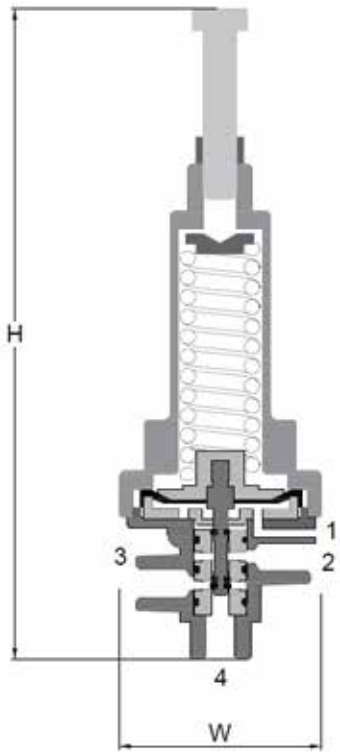
- A pressure-sustaining, 3-way pilot valve
- Differential pressure sensing - Optional
- Fully vents the control chamber to open the main valve - allows minimizing pressure-losses, when upstream pressure rises above the set value.
- Wide regulation range
- Easy to adjust

Typical Applications

- Pressure sustaining valves - PS
- Pressure relief valves - PS[R]
- Quick-acting pressure relief - QR

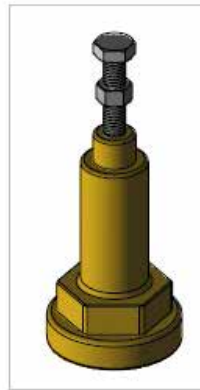
Spring Adjustment Range

Spring	Bar	PSI
Standart	1,5 - 12	22 - 175
Optional	0,5 - 6	7 - 85



3 Way Multipurpose Pilots

Pressure Sustaining Metal Pilot (3 way)



Bonnet Kit



Spring Kit

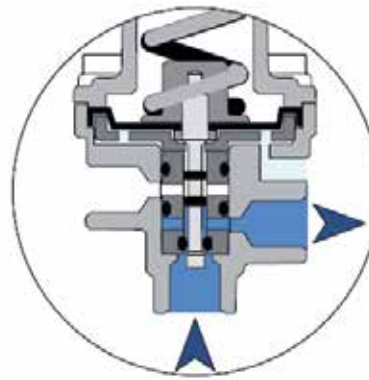


Internal Parts Kit

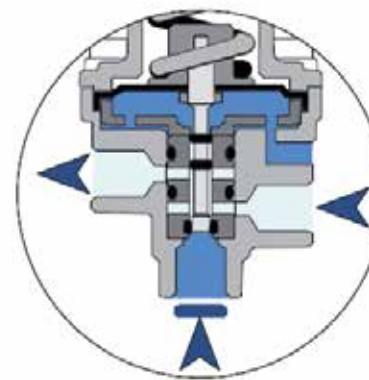


Body Kit

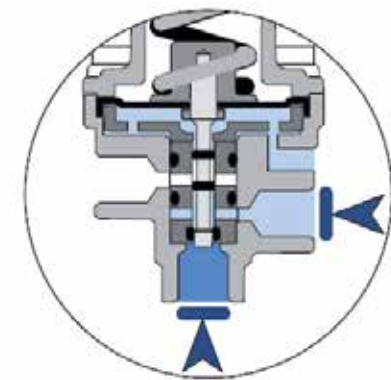
Principle of Operation



Low Pressure



High Pressure



Required Pressure

27

3 Way Multipurpose Pilots

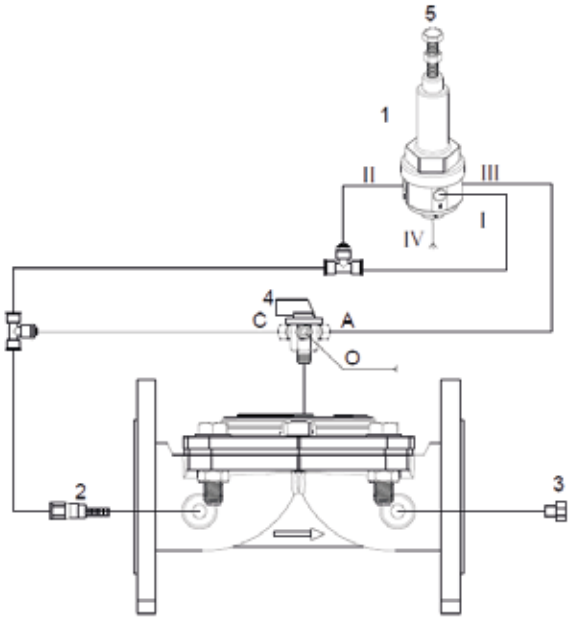
Pressure Sustaining Metal Pilot (3 way)

Connections

Port	Pressure Reducing
1	Upstream Pressure
2	Upstream Pressure
3	Valve Control Chamber
4	Vent

Technical Data

General		
Pressure Rating	25 bar / 360 psi	
Pressure Adjustment Range	0,5 - 12 bar /7 - 175 psi	
Fluid Temoerature	60 °C max. / 140 °F max.	
Weight	1,04 Kg / 2,3 lbs	
Materials	Standart	Optional
Body and Bonnet	Brass	SST
Elastomers	NBR	EPDM
Internal Parts	SST, PVDF	
Spring	SST	
Dimension		
H (Height)	170 mm / 6,7 inch	
W (Width)	60 mm / 2,36 inch	
Port Connection		
1,2,3,4	BSP 1/4"	



Main Component

- 1- Pressure Sustaining Valve
- 2- In-Line Finger Filter
- 3- End Cap
- 4- 3 Way Selector Valve
- 5- Adjust Bolt

3 Way Metal Pilots

Rate of Flow Metal Pilot (3 way)

Pressure sustaining metal pilot, diaphragm actuated, spring- loaded pilot-valves that are designed for control of pressure-sustaining hydraulic valves. The pilot valve serves as a selector between the common port and the two other ports. The pilot valve will vent, pressurize or lock the hydraulic valve's chamber as a factor of the relation between the regulated pressure and the adjusted set-value.

Features

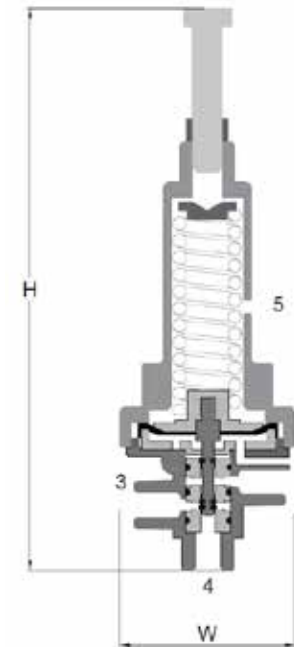
- A pressure-sustaining, 3-way pilot valve
- Differential pressure sensing - Optional
- Fully vents the control chamber to open the main valve - allows minimizing pressure-losses, when upstream pressure rises above the set value.
- Wide regulation range
- Easy to adjust

Typical Applications

- Pressure sustaining valves - PS
- Pressure relief valves - PS[R]
- Quick-acting pressure relief - QR

Spring Adjustment Range

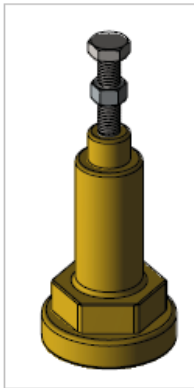
Spring	Bar	PSI
Standart	1,5 - 12	22 - 175
Optional	0,5 - 6	7 - 85



3 Way Metal Pilots

Rate of Flow Metal Pilot (3 way)

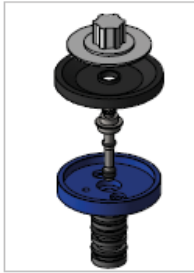
29



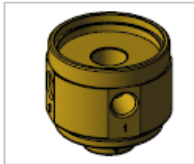
Bonnet Kit



Spring Kit

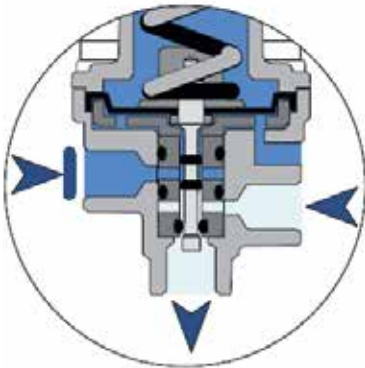


Internal Parts Kit

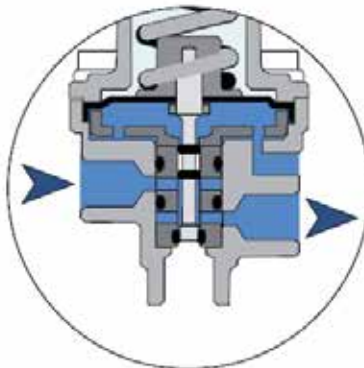


Body Kit

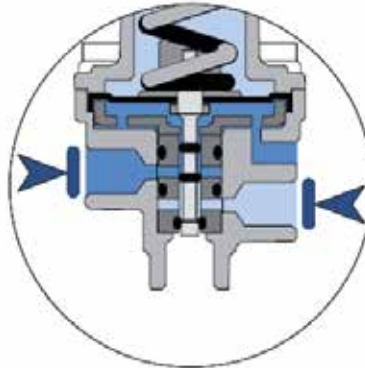
Principle of Operation



Low Pressure



High Pressure



Required Pressure

3 Way Metal Pilots

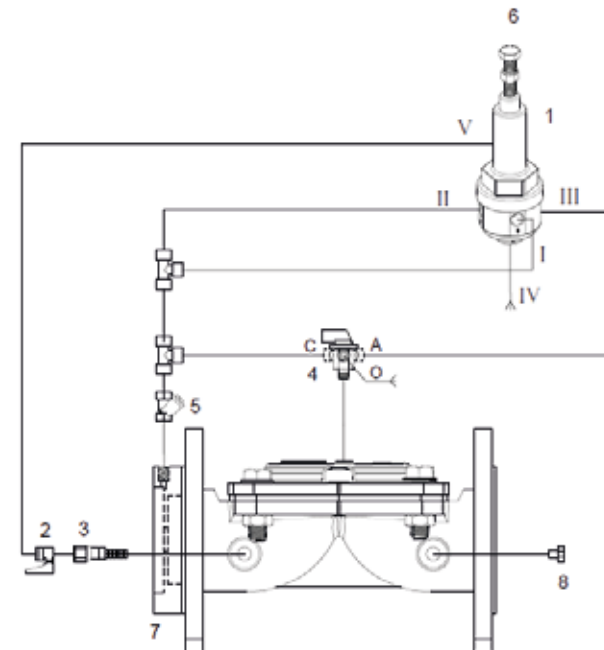
Rate of Flow Metal Pilot (3 way)

Connections

Port	Pressure Reducing
1	Upstream Orifice Plate
2	Upstream Orifice Plate
3	Valve Control Chamber
4	Vent
5	Upstream Pressure

Technical Data

General		
Pressure Rating	25 bar / 360 psi	
Pressure Adjustment Range	2 - 60 bar /3 - 90 psi	
Fluid Temoerature	60 °C max. / 140 °F max.	
Weight	1,04 Kg / 2,3 lbs	
Materials	Standart	Optional
Body and Bonnet	Brass	SST
Elastomers	NBR	EPDM
Internal Parts	SST, PVDF	
Spring	SST	
Dimension		
H (Height)	170 mm / 6,7 inch	
W (Width)	60 mm / 2,36 inch	
Port Connection		
1,2,3,4	BSP 1/4"	

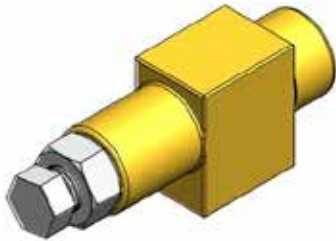


Main Component

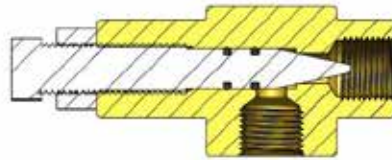
- 1- Flow Control Pilot
- 2- Mini Ball Valve
- 3- Finger Filter
- 4- 3 Way Mini Ball Valve
- 5- Strainer
- 6- Adjust Bolt
- 7- Orifis Plate
- 8- Blind Cap

The needle valve adjusts the water flow rate that will pass through it.
In this way, the opening and closing speeds of the main valves can be changed

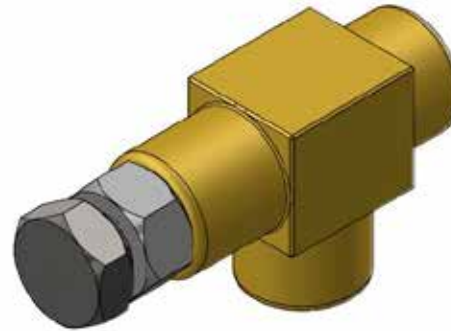
31



1/4" 6mm Orifis hole
Brass / SS Optional



Section A-A



1/2" 10mm Orifis hole
Brass / SS Optional

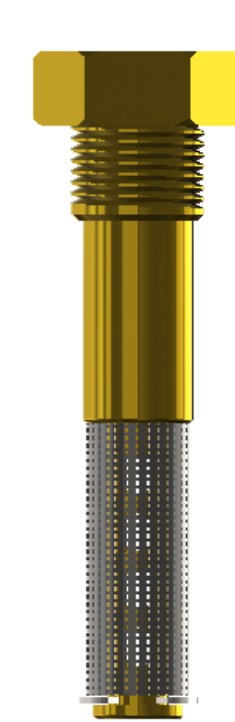


1/4" 10mm Orifis hole
Plastic

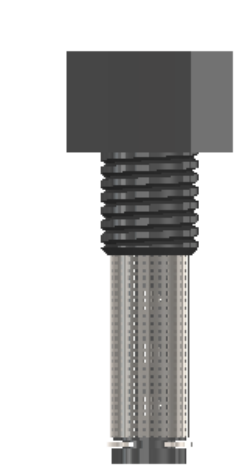
Brass Finger Valves



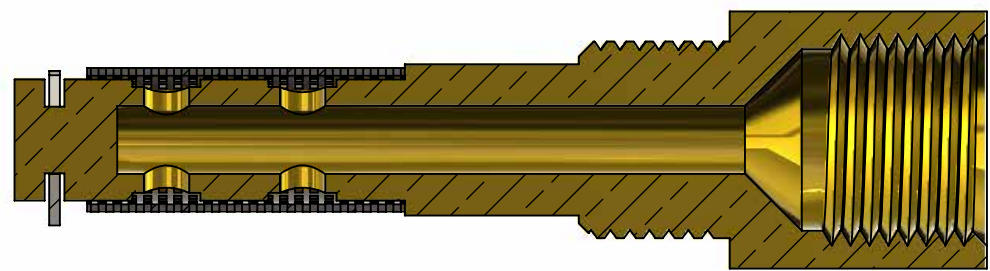
1/4" Male - Female
Brass / Optional SS



1/2" Male - Female
Brass / Optional SS

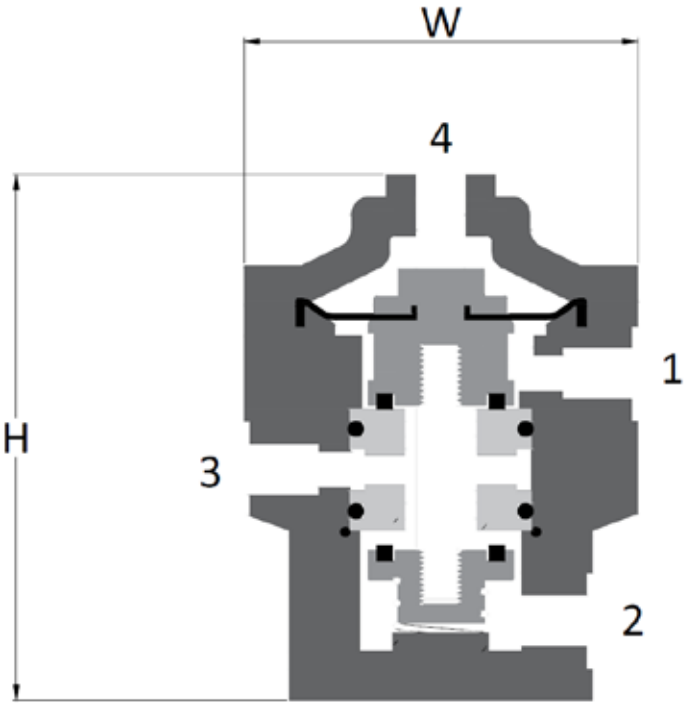


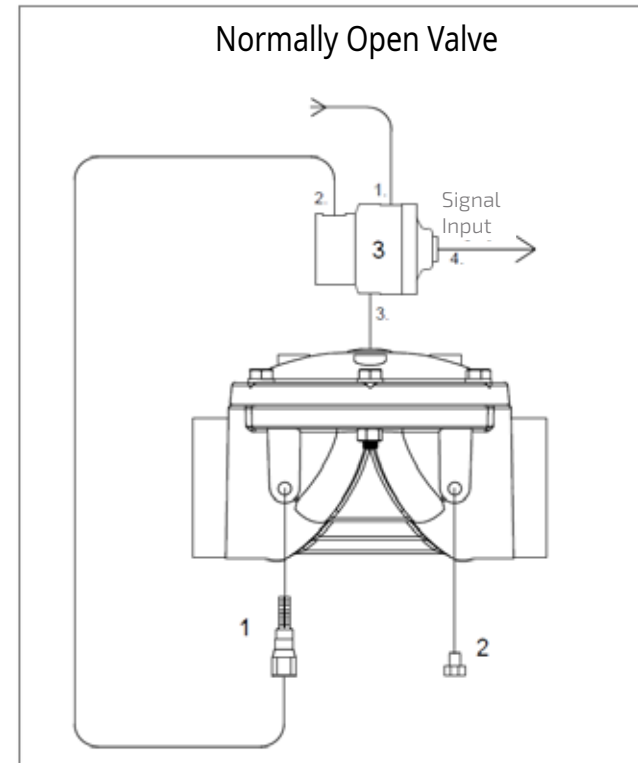
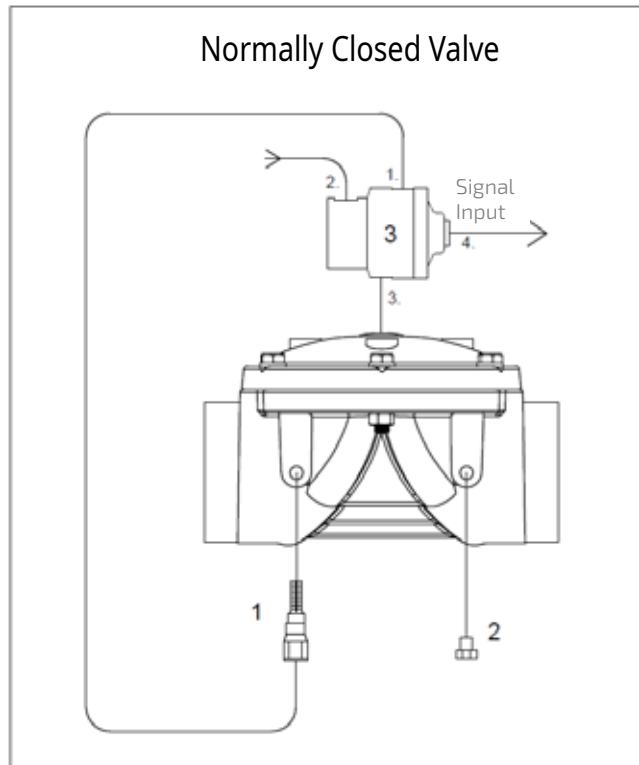
1/4" Male - Female
1/4" Male - 1/81Female
Plastic



Relays that can be used in solenoid controlled hydraulic valves reduce the opening and closing times of the valve by allowing the valve to react faster. The fluid sent via the solenoid passes through the large orifice diameters inside the relay mounted on the valve cover and enables the valve to open and close instantly.

Working Pressure	0,5 - 10 Bar
Body Cover Material	Polyamide
Sealing Elements	NBR
Internal Set	Polyamide
Spring	SST302
Connection Elements	Stainless
H	87mm
W	65mm
Ports(1-2-3-4)	G 1/8"

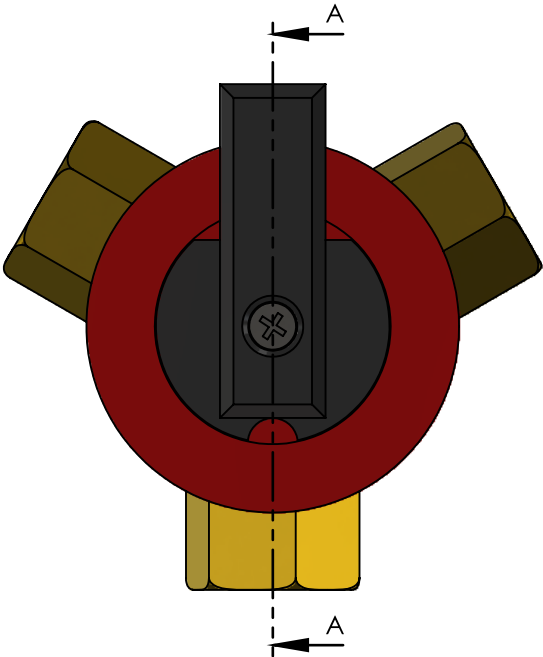
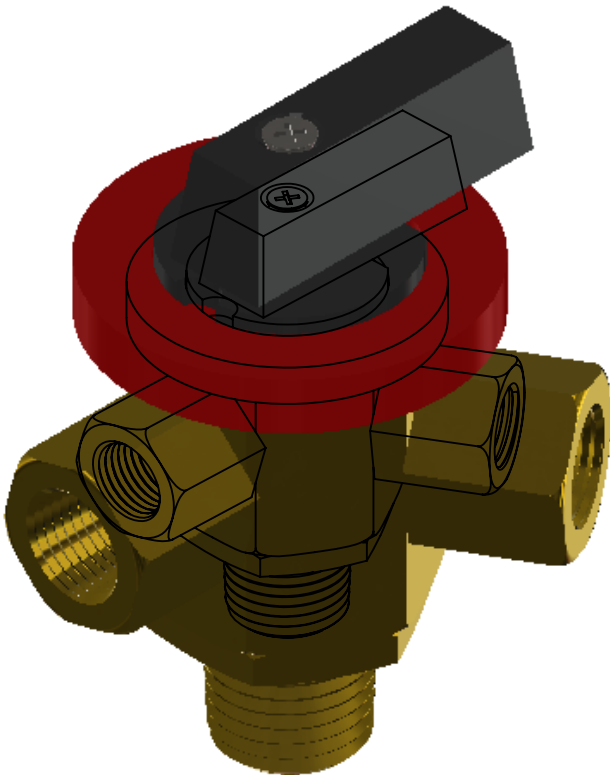




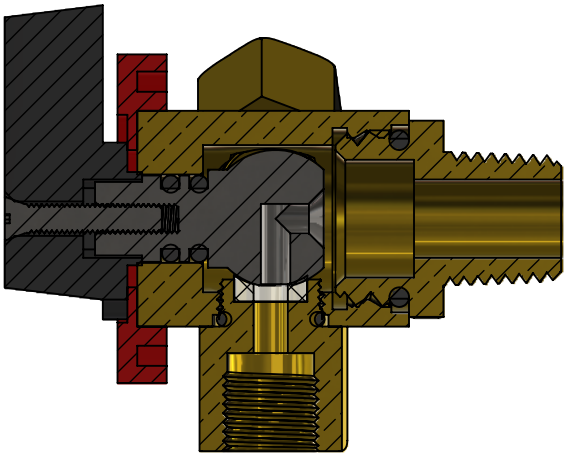
1. Finger Filter
2. Blind Plug
3. Hydraulic Accelerator

3 Way Selector Mini Valve

35



Bottom Port: 1/4" Male
Adaptor Aport x3: 1/8" Female



We **Care** About
Every Drop of
Water

36



Product Brand / Ürünün Markası

TYPHOON

Directives and Regulations / Direktif ve Yönetmelikler

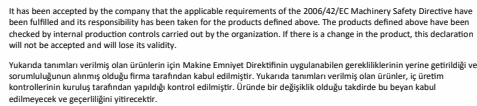
2014/53/EU Pressure Equipment Directive / 2014/53/EU Baskın Ekipmanlar Direktifi

It has been accepted by the company that the applicable regulations for the 2014/53/EU Pressure Equipment Directive have been fulfilled and its responsibility has been taken for the products defined above. The products defined above have been checked by internal production controls carried out by the organization. If there is a change in the product, this declaration will not be accepted and will lose its validity.

Yukarıda tanımlanmış ürünün için yürürlükte olan 2014/53/EU Baskın Ekipmanları Yönetmeliğinin uygulanabilmesi gerektirilenlerini yerine getirdiği ve sorumluluğunun ayni olarak firma tarafından kabul edildiği beyan edilmiştir. Yukarıda tanımlanmış ürünler, üretilen kontrolün kuruluş tarafından yapılmıştır. Ürünlerde bir değişiklik olduğunda, bu beyan kabul edilemez ve geçersiz olacaktır.

International Documenting System Doo.
Budva / Montenegro

Authorised by
Vladimir Vučić SEKULIĆ



International Documenting System Doo.
Budva / Montenegro

Authorised by
Vladimir Vučić SEKULIĆ



EXHIBITIONS





Kemalpaşa OSB Mahallesi Kuzey Sanayi
Caddesi Dış Kapı No:13
Kemalpaşa / İzmir

+90 232 458 49 99
+90 232 458 57 67

www.tayfursu.com.tr | info@tayfursu.com.tr

TYPHOON

Her Fabrika Bir Kaledir*

K. Atatürk

*Every factory is a fortress

