



**PLASTIC
AGRICULTURAL WOLTMAN TYPE WATER METER**

TAYFUR WATER SYSTEMS

TYPHOON®

We **Care** About
Every Drop of
Water



Tayfur Water Systems, which was established by Tayfun Yazaroğlu in 2004 in Izmir. We continue our activities as "Tayfur Water Systems Machinery Engineering Industry and Trade Inc." since 2017.

Our company offers its products and experiences to the local market and international market. Tayfur Water Systems, while strengthening its recognition abroad, continues to expand its production, sales and marketing activities every day.

Our engineers and technical staff, technological infrastructure, manufacturing, sales, project-consulting, contracting and service planning meets the requirements of the sector.

Our company manufactures "TYPHOON" brand, hydraulic control valves, plastic hydraulic control valves, backwash valves, plastic backwash valves, impact-free dynamic suction cups, plastic suction cups, bottom clamps, filter reverse flushing control devices. It is progressing towards becoming a strong brand in both domestic and foreign markets by meeting the special demands of its domestic and foreign customers.

STORY OF US

Our Quality Policy

In order to be a leader in quality in the sales, marketing and service sector by complying with legal conditions and to comply with the requirements of Quality Management System in order to meet the needs and expectations of our customers, to continuously improve the efficiency and to not compromise the quality under any circumstances.

Our Mission

To be a company aiming to present its synergy in the national and international market which has always taken its responsibilities, desires and expectations of our customers in a correct, reliable and timely manner, within the framework of high quality standards, transforming efficiency and competition into an advantage...

Our Vision

To be a leading, innovative, powerful and reputable enterprise in its sector.



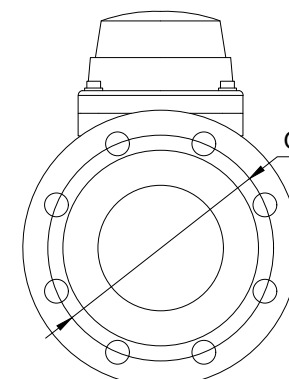
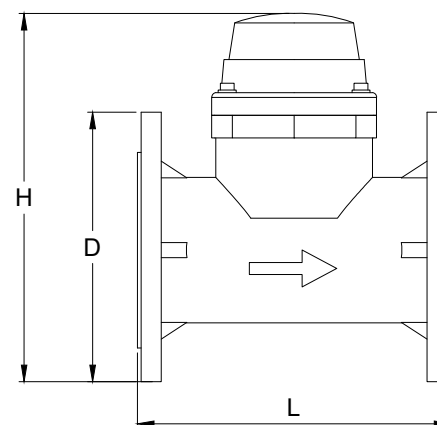
AGRICULTURAL WOLTMAN TYPE WATER METER



- Eco-friendly, long-lasting counter
- Industrial use
- Use in agricultural fields
- Suitability for drinking water installations
- Le corps est en polyamide de fibre de verre renforcé composite
- MID approved and certified
- First-class materials and production technology
- Protective, durable body for outdoor and climatic conditions
- Wide and dynamic measuring range
- Accurate water flow measurement with very low pressure losses
- 2 years warranty

DN50 ve DN65 10lt With Pulse
DN80 ve DN100 100lt With Pulse

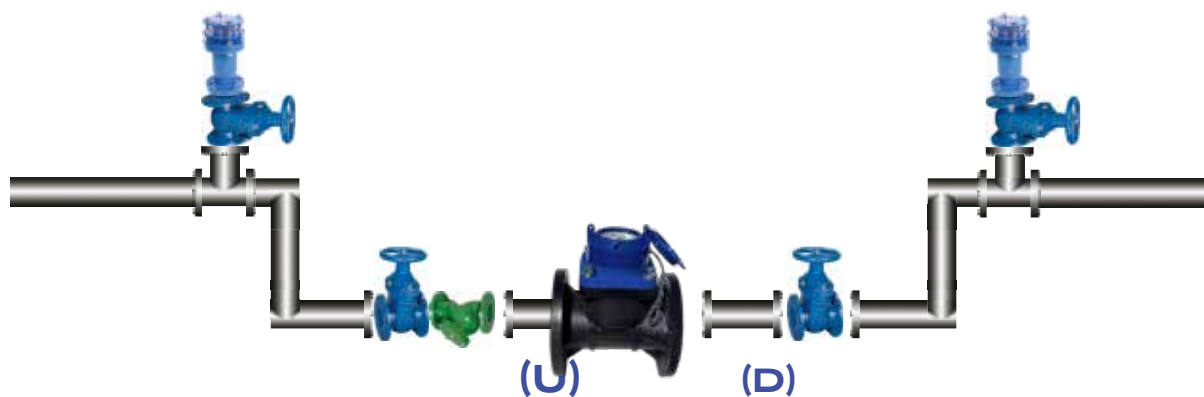
Size	DN50	DN65	DN80	DN100
L	200	200	225	250
H	250	260	284	296
D	165	185	200	220
G	125	145	160	180
nXM	4xM10	4xM10	8xM10	8xM10



Assembly Table

Inlet Valve Pipe Diameter (mm)	Inlet Valve Diameter (mm)	Filter Diameter (mm)	Meter Inlet Pipe Diameter (mm)	Meter Inlet Pipe Length (U) 10xDN (mm)	Meter Diameter (mm)	Meter Outlet Pipe Diameter (mm)	Meter Inlet Pipe Length (D) 5xDN (mm)	Outlet Valve Diameter (mm)
50	50	50	50	500	50	50	250	50
65	65	65	65	650	65	65	325	65
80	80	80	80	800	80	80	400	80
100	100	100	100	1000	100	100	500	100

Counter Application Example for 50 -100 mm

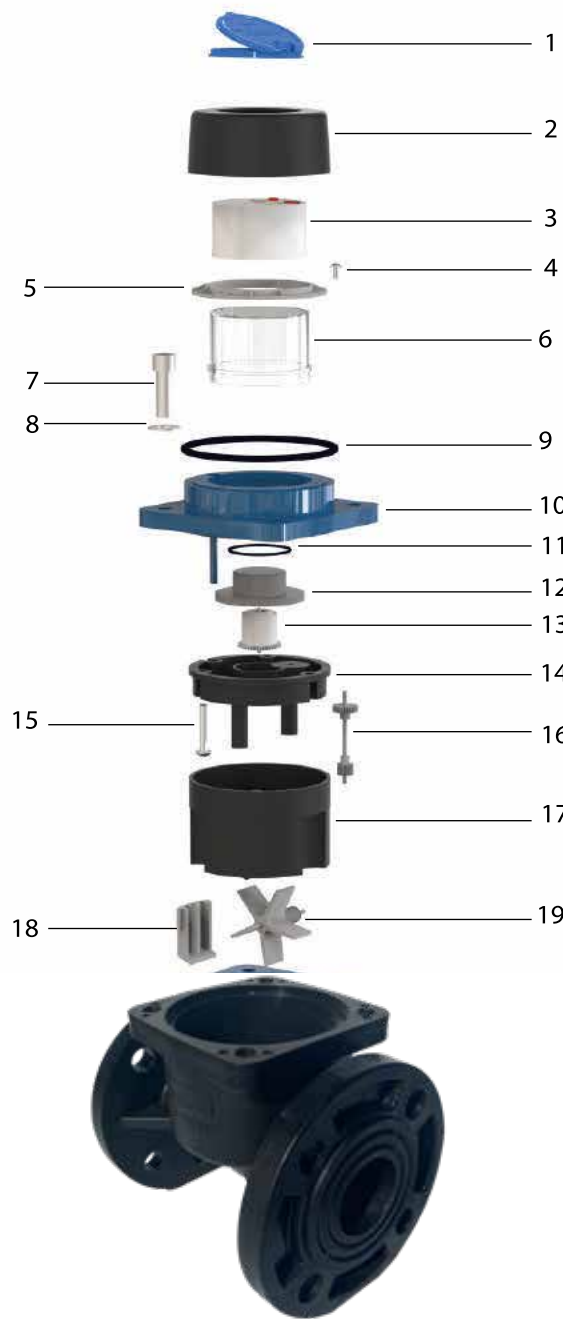


AGRICULTURAL WOLTMAN TYPE WATER METER

Technical Specifications

Nominal diameter	DN	mm	DN50	DN65	DN80	DN100					
	Size	inch	2"	2 1/2"	3"	4"					
Maximum flow rate	Q4		≤78,8	≤78,8	≤125	≤200					
Continuous flow rate	Q3		≤63	≤63	≤100	≤160					
Pass flow	Q2		≥2,52	≥2,52	≥4,0	≥6,40					
Minimum flow rate	Q1		≥1,57	≥1,57	≥2,50	≥4,00					
Measuring range (R)	Q3 / Q1	≤40									
Transition flow rate	Q2 / Q1	1,6									
Overload flow	Q4 / Q3	1,25									
Accuracy class	-	±5%									
Acceptable error rate at low flow	(MPE _L)	Water temperature 30°C se ± %2 Water temperature> 30°C se ± %3									
Acceptable error rate at high flow	(MPE _H)	T30 & T50									
Temperature class	T	MAP16									
Water pressure class	Bar	ΔP 10									
Pressure loss class	-	ΔP 25	ΔP 10								
Reading range	m3	999,999				9,999,999					
Read device resolution	m3	0,001				0,01					
Flow profile precision class	-	U10D5									
Connection style	-	H (Horizontal)									
Horizontal length of the meter	mm	200	200	225	250	250	300	350	450	500	
magnetic switch power supply	U _{max} / I _{max}	max 24V / 0,01A									
Magnetic switch K-Factor	impulse / L	0,001 & 0,0001									

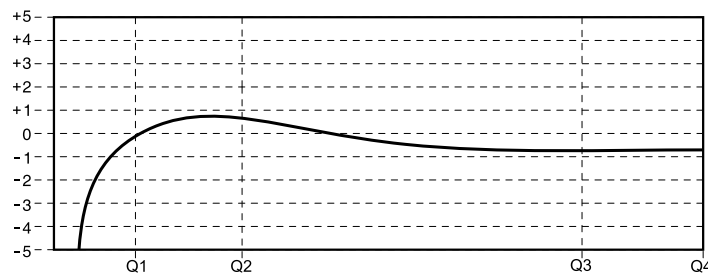
AGRICULTURAL WOLTMAN TYPE WATER METER



PARTS	
1	Cover
2	Retaining Ring
3	Mechanism and Indicator
4	Pivot
5	Plate
6	Glass cover
7	Screw
8	Gasket
9	O-Ring
10	Flange Cover composite reinforced glass fiber polyamide
11	O-Ring-2
12	Gear Plate
13	Gear Wheel
14	Top Support
15	Screw
16	Mechanical Transmission
17	Sub-Support
18	Regulation Spindle
19	Propeller
20	Body composite reinforced glass fiber polyamide



Error Graph



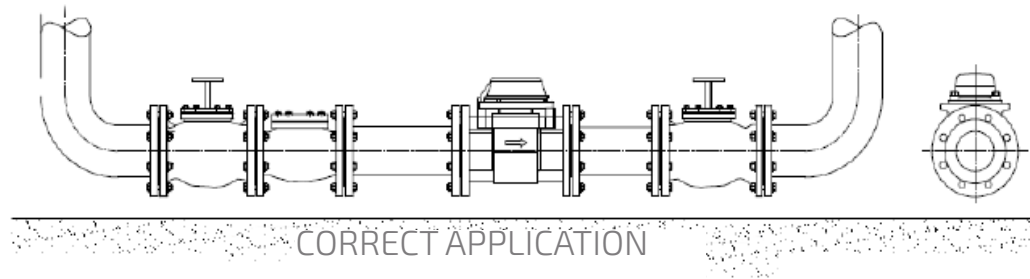
AGRICULTURAL WOLTMAN TYPE WATER METER

Water Meter Installation Specification

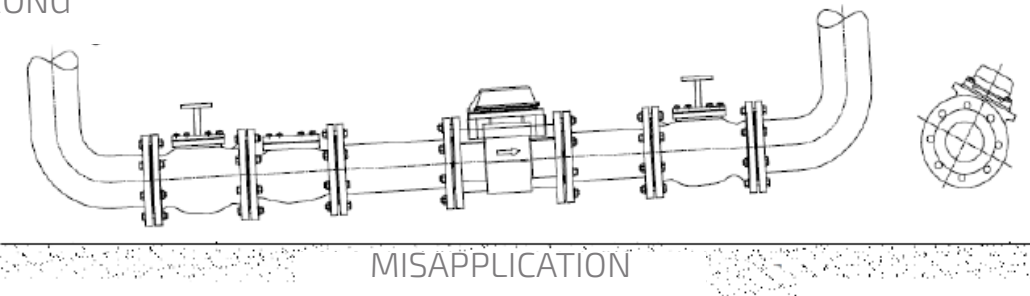
1. The meter mounting location should be a closed and safe place, and should not be in a situation that would prevent the attendant control personnel from checking the meter at any time.
2. In the installation of the meter, respectively, before the meter; There should be a ball valve and a strainer filter, and a ball valve after the meter. All pipes must be firmly clamped.
3. During assembly, the use of elbows should be avoided as much as possible.
4. The meter should never be installed in such a way that it will be exposed to direct sunlight. If it is to be installed in the open; It should be placed in a box that will not receive direct sunlight, prevent water-snow entry and provide air circulation.
5. The meter should not be installed in a humid or humid environment.
6. The meter must be mounted parallel to the ground and horizontally connected. The meter must not be mounted at an angle, inclined or perpendicular.

7

CORRECT



WRONG



7. Possible foreign objects (mortar, paint, iron, sawdust, etc.) After cleaning (can be achieved by running some water), the meter must be connected to the installation.
8. The nominal diameter of the meter and the pipe diameters used in the installation must be equal.

AGRICULTURAL WOLTMAN TYPE WATER METER

CE	AB UYGUNLUK BEYANI EU DECLARATION OF CONFORMITY	
ÜRETİCİ (The manufacturer)	EUROMET ÖLÇÜ ALETLERİ LTD. ŞTİ.	
Merkez & Fabrika Adresi (Center & Factory Address)	ATB İŞ MERKEZİ K BLOK NO:278 YENİMAHALLE/ANKARA	
Telefon (Phone)	+90 312 297 1214	Web: www.euromet.com.tr
Fax	+90 312 297 1215	

We declare that the following products are in accordance with the following European Directives and the following harmonized European Standards, normative documents and guidelines have been applied...

We also hereby declare that the production of above mentioned product meets MID directive Requirements as determined with EU type approval certificate

MODEL (Type)	AB Tip İnceleme Sertifika Numarası (EU Type- examination Certificate number)	MODÜL D NO (ON A QUALITY MANAGEMENT SYSTEM Annex D number)	Uygunluk Değerlendirmesini Yapan Kurumun Adı ve No (Notified Body Identification Name and Number)
WT-50-ET	MRC RO-2275-20495	MRC RO-2275-18-308	MRC, Miscarea Romana pentru Calitate 2275
Seri NO (serial number):		52432420	

QMS approved and surveillance by MRC n.o. notified body 2275 Uygun
Olduğu Yönetmelikler (Regulation as appropriate)

Referans No (Reference Num.)	Adı (Title)
2014/32/EU	Ölçü Aletleri Yönetmeliği (Measuring instrument directive)

Uygun Olduğu Standartlar ve Uluslararası Tavsiyeler Appropriate,
the Standards and International Recommendations

Referans No. (Reference num.)	Adı (Title)
OIML R 49-1	Water meters for cold potable water and hot water. Part 1: Metrological and technical requirements
OIML R 49-2	Water meters for cold potable water and hot water. Part 2: Test methods
ISO 4064-1	Water meters for cold potable water and hot water - Part 1: Metrological and technical requirements
ISO 4064-2	Water meters for cold potable water and hot water - Part 2: Test methods

Seri numarası ve kullanıma sunulduğu tarih yazan ürünün yukarıdaki açıklamalara uygun olduğunu bildiririz.
Bu AB Uygunluk beyanı imalatçının sorumluluğu altında düzenlenmiştir. The serial number and made available by
the date notified that the product according to the notes above. This declaration is issued under the sole responsibility of
manufacturer.

Üretim Yeri

(Production site)

İZMİR

Beyan Tarihi

(10.08.2021)
(Date of declaration)

EUROMET Adına İmza
(On behalf of Signature EUROMET)
AYLEN COŞKUN

CERTIFICATES

CERTIFICATE CERTIFICATE OF CONFORMITY

Manufacturer / Üretici
TAYFUR SU SİSTEMLERİ MAKİNE MÜHENDİSLİK SANAYİ VE TİCARET ANONİM ŞİRKETİ
Address / Adres
KARACAĞAĞLAN MAHALLESİ 6172 SOKAK NO:19 A BORNOVA / İZMİR / TÜRKİYE

Product Description / Ürün Tanımı
HYDRAULIC CONTROL VALVES / HİDROLİK KONTROL VANALARI

Product Types / Ürün Tipleri
TYPHOON SERIES
PRESSURE REDUCING CONTROL VALVE / PRESSURE REDUCING CONTROL VALVE
PRESSURE SUSTAINING CONTROL VALVE / PRESSURE SUSTAINING CONTROL VALVE
SOLENOID CONTROL VALVE / QUICK RELIEF CONTROL VALVE / FLOAT LEVEL CONTROL VALVE
ELECTRIC FLOAT LEVEL CONTROL VALVE / DIFFERENTIAL FLOAT LEVEL CONTROL VALVE
PUMP CONTROL VALVE / DEEP WELL PUMP CONTROL VALVE / SURGE ANTICIPATING VALVE
HYDRAULIC CHECK VALVE / T TYPE HYDRAULIC CONTROL VALVE
QUICK PRESSURE RELIEF CONTROL VALVE
BACKFLUSHING CONTROL VALVES, VICTAULIC 3x2 - VICTAULIC 4x3 - FLANGE 3x2 - FLANGE 4x3 - VICTAULIC & THREADED 2x2

Product Features / Ürün Özellikleri
Basing / Pressure: PN10-PN16 - PN25
Max. Çalışma sıcaklığı / Max. Operating Temperature: 60°C-80°C
Caplar / Diameters : DN20(3/4") den DN300(12") e kadar
Üretim Standartları / Production Standards: TS EN 558-1 Esas Seriler 48 FTF-CTF
Vana Boyu / Valve Length : TS ISO 7005-2 , TS EN 558-1
Flanş Ölçüleri / Flange Dimensions: TS ISO 5208 – ISO 7005/2 – EN 1092/2 – BS 40504 – BS 10E- ANSI
Basing Testleri: Gövde Test Basıncı / Pressure Tests: Body Test Pressure : 1,5 x PN
Sızdırmazlık Test Basıncı / Sealing Test Pressure: 1,1 x PN
Genel Tasarımlar / General Designs: TS EN 1074-1-2-5

Product Brand / Ürünün Markası
TYPHOON

Directives and Regulations / Direktif ve Yönetmelikler
2014/68/EU Pressure Equipment Directive / 2014/68/EU Basınç Ekipmanları Direktifi
It has been accepted by the company that the applicable requirements of the 2014/68 / EU Pressure Equipment Directive have been fulfilled and its responsibility has been taken for the products defined above. The products defined above have been checked by internal production controls carried out by the organization. If there is a change in the product, this declaration will not be accepted and will lose its validity.
Yukarıda tanımlan verilmemiş olan ürünlerin için 2014/68/EU Basınç Ekipmanları Yönetmeliğinin uygulanabilen gerekliliklerinin yerine getirildiği ve sorumluluğun alınmış olduğu firma tarafından kabul edilmiştir. Yukarıda tanımlan verilmemiş olan ürünler, iç üretim kontrollerinin kuruluş tarafından yapıldığı kontrol edilmiştir. Üründe bir değişiklik olduğu takdirde bu beyan kabul edilmeyecek ve geçerliliğini yitirecektir.

CERTIFICATE NUMBER: IDS.CE.2024.19095.1
Certificate Date : 16.02.2024
Validity Date : 16.02.2025

International Documenting System Doo.
Budva / Montenegro



CERTIFICATE CERTIFICATE OF CONFORMITY

Manufacturer / Üretici
TAYFUR SU SİSTEMLERİ MAKİNE MÜHENDİSLİK SANAYİ VE TİCARET ANONİM ŞİRKETİ
Address / Adres
KARACAĞAĞLAN MAHALLESİ 6172 SOKAK NO:19 A BORNOVA / İZMİR / TÜRKİYE

Product Description / Ürün Tanımı
FILTER BACKWASH CONTROL DEVICES / FİLTRE TERS YIKAMA KONTROL CİHAZLARI

Product Types / Ürün Tipleri
AC Tip – 1-2-3 Dahili DP
DC Tip – 1-2-3 Dahili DP
AC Tip – 2-4-6 DP Harici
DC Tip – 2-4-6 DP Harici
AC Tip – 2/10 DP Harici
DC Tip – 2/10 DP Harici (2 Kablolu)
Basing Fark Çihazı (DP)

Product Brand / Ürünün Markası
FLUSHCON

Directives and Regulations / Direktif ve Yönetmelikler
2006/42/EC Machinery Safety Directive / 2006/42/AT Makine Emniyet Direktifi
2014/35/EC Low Voltage Directive / 2014/35/AT Alçak Gerilim Yönetmeliği
EN ISO 12010:2010, EN 60204-1:2018

It has been accepted by the company that the applicable requirements of the 2006/42/EC Machinery Safety Directive have been fulfilled and its responsibility has been taken for the products defined above. The products defined above have been checked by internal production controls carried out by the organization. If there is a change in the product, this declaration will not be accepted and will lose its validity.
Yukarıda tanımlan verilmemiş olan ürünlerin için Makine Emniyet Direktifinin uygulanabilen gerekliliklerinin yerine getirildiği ve sorumluluğun alınmış olduğu firma tarafından kabul edilmiştir. Yukarıda tanımlan verilmemiş olan ürünler, iç üretim kontrollerinin kuruluş tarafından yapıldığı kontrol edilmiştir. Üründe bir değişiklik olduğu takdirde bu beyan kabul edilmeyecek ve geçerliliğini yitirecektir.

CERTIFICATE NUMBER: IDS.CE.2024.19094.1
Certificate Date : 16.02.2024
Validity Date : 16.02.2025

International Documenting System Doo.
Budva / Montenegro



EXHIBITIONS





Kemalpaşa OSB Mahallesi Kuzey Sanayi
Caddesi Dış Kapı No:13
Kemalpaşa / İzmir

+90 232 458 49 99
+90 232 458 57 67

www.tayfursu.com.tr | info@tayfursu.com.tr

TYPHOON

**Her
Fabrika** Bir
Kaledir*

K. Atatürk

*Every factory is a fortress

